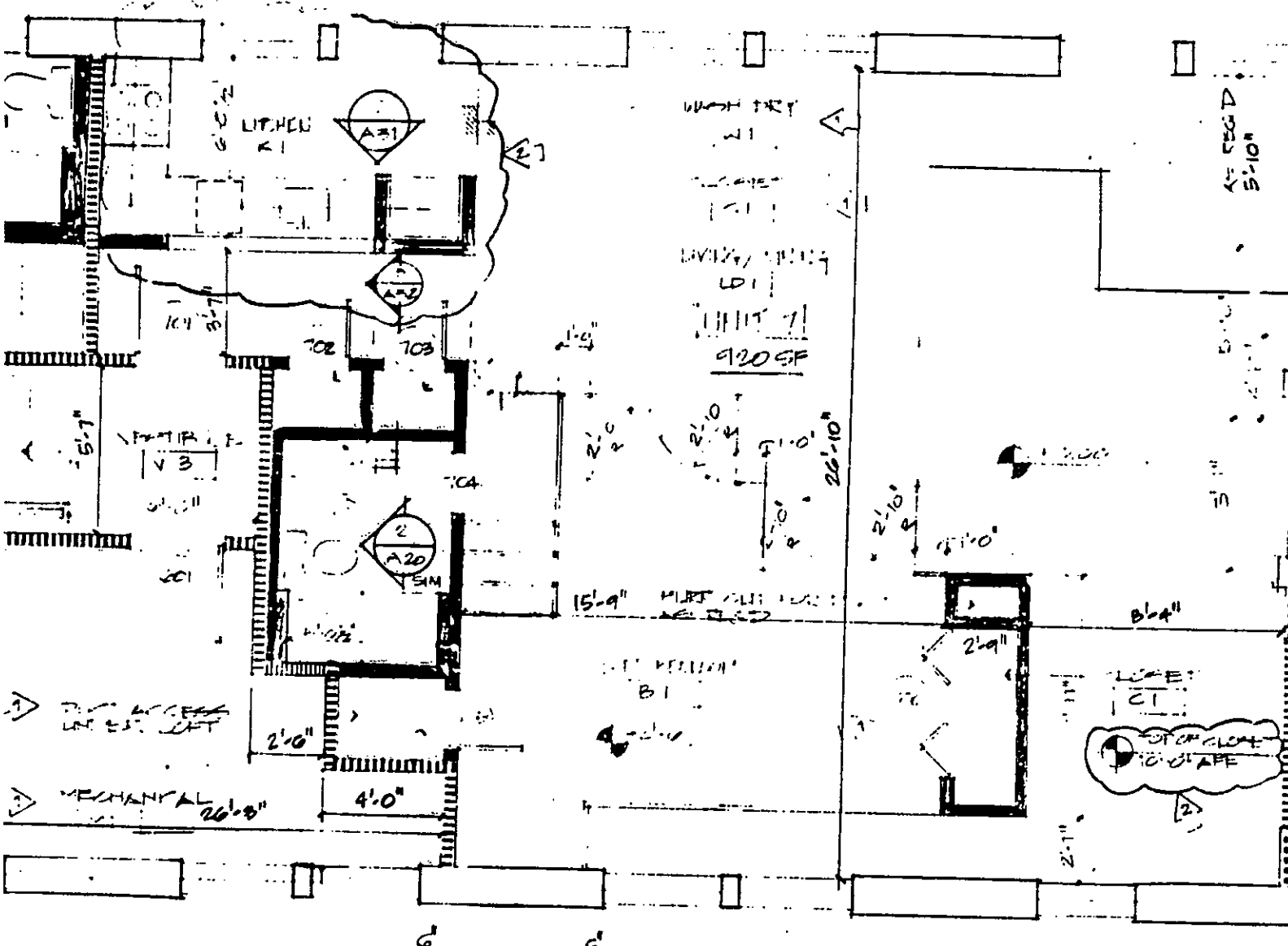


2) PLAN AT 2ND FLOOR - 309 MEETING STREET  
 1/4" = 1'-0"

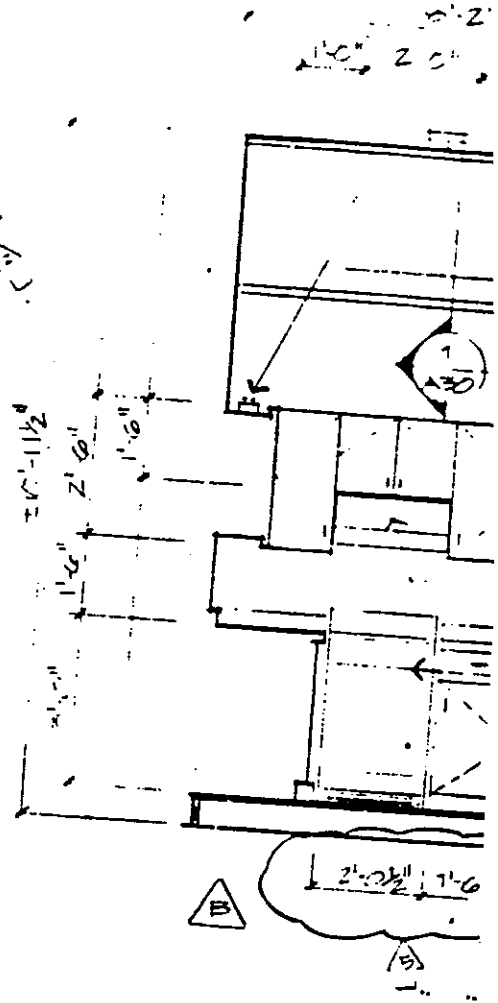
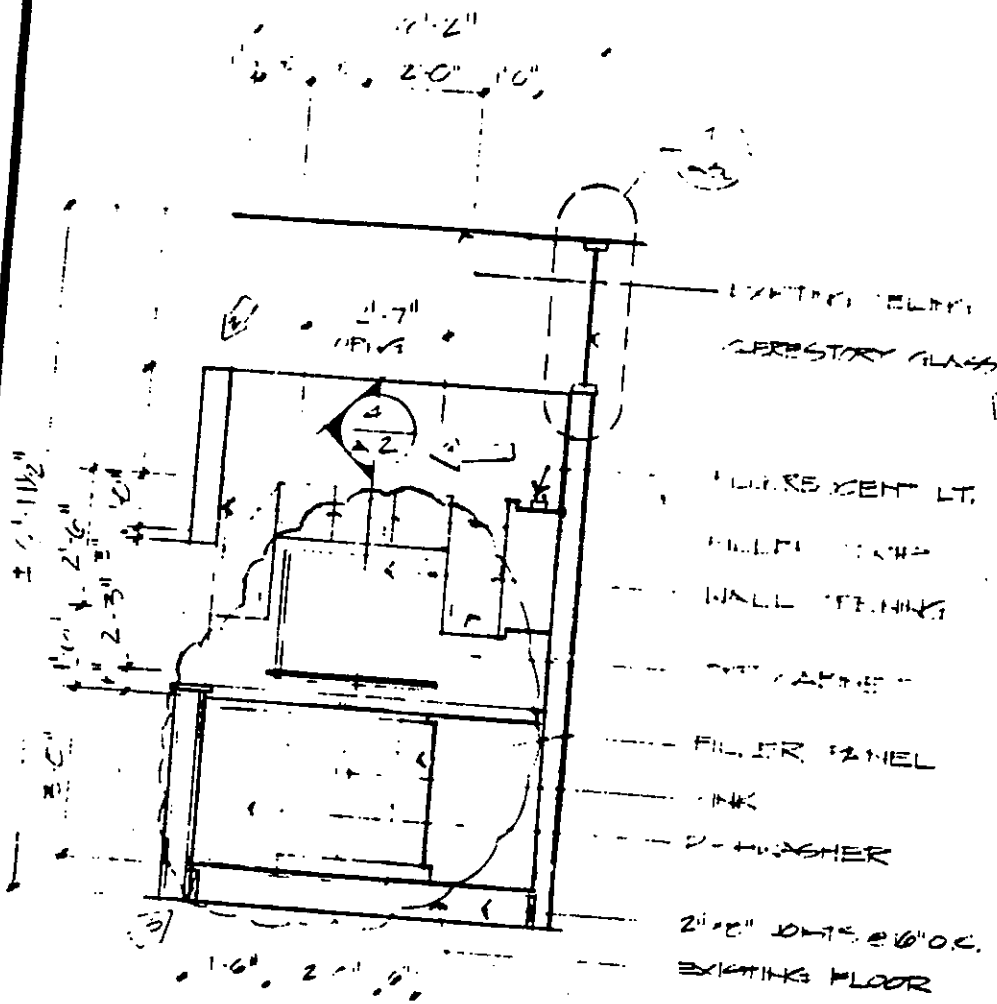




STREET

ALL WALLS TO BE  
 FINISHED WITH  
 1/2" JAMB TRIM





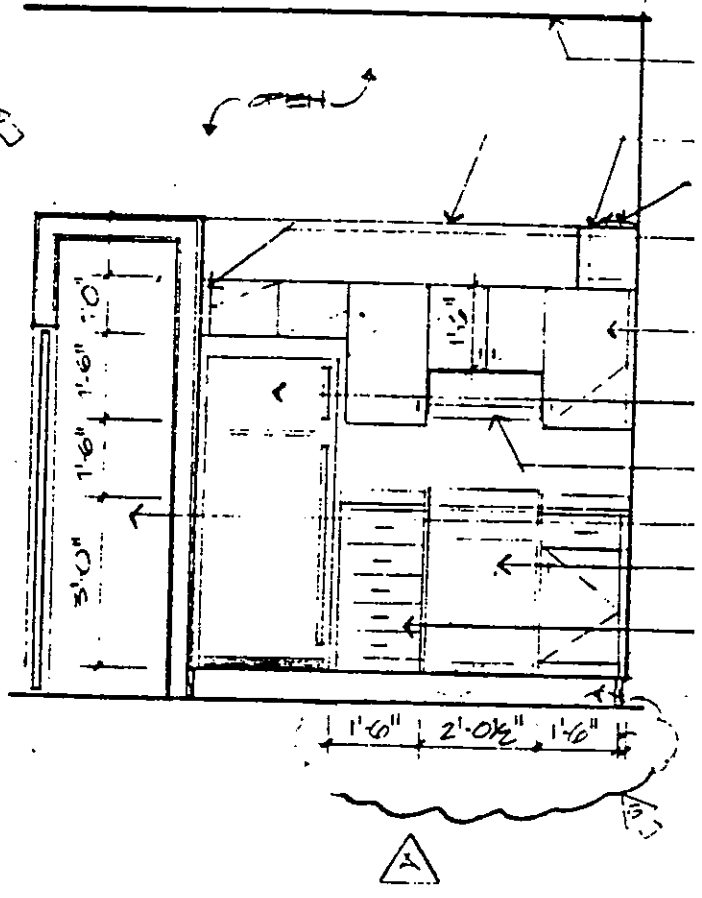
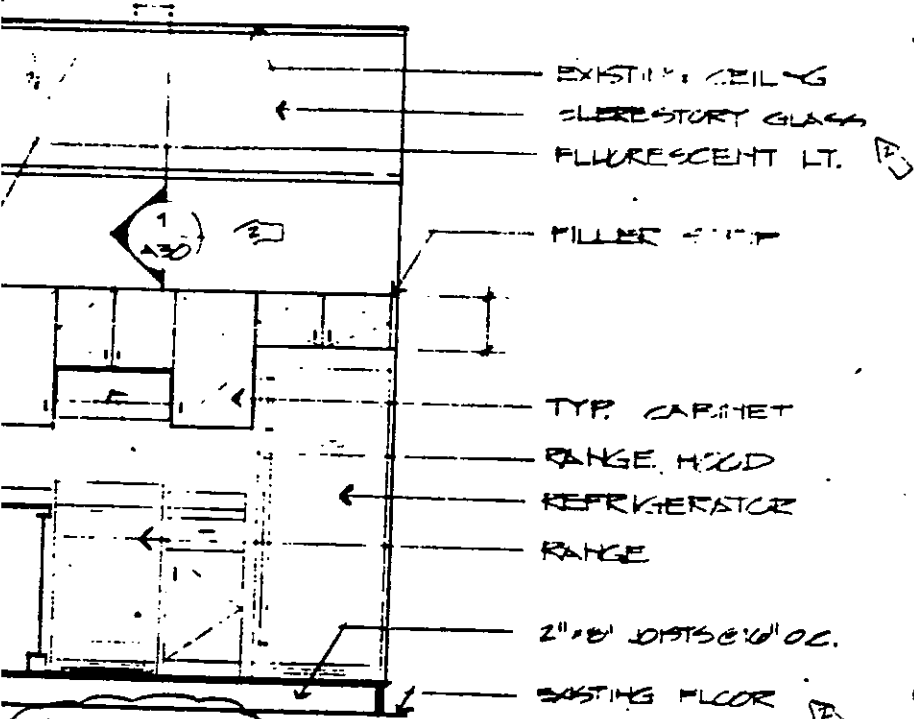
1 KITCHEN ELEVATIONS  
2 1/2" = 1'-0"

Document Continues  
Use Manual Search



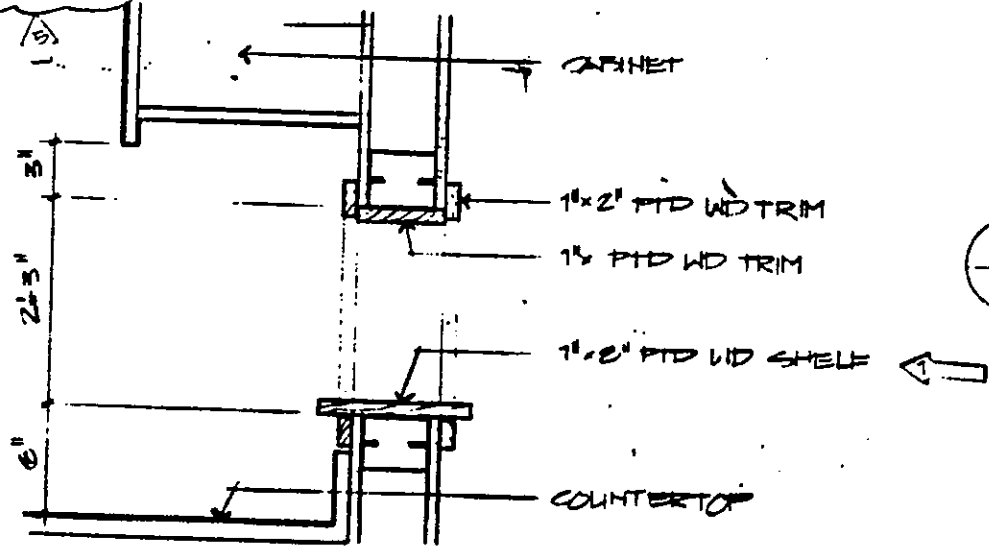
2'-0" 6" 2'-6" 5"

2'-6" 1'-6" 2'-0" 1'-6" 5"



2'-0 1/2" 1'-6"

1'-6" 2'-0 1/2" 1'-6"

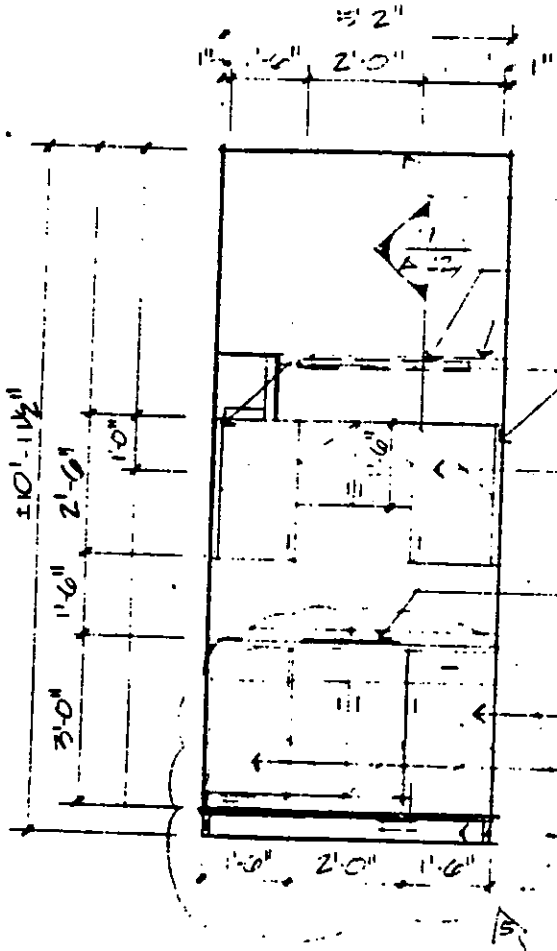


2  
2 KITCHEN ELE  
3/8" = 1'-0"

4 DETAILED KITCHEN OPTG.  
SCALE 1/2" = 1'-0"

2'-11 1/2" 9'-8" 5'-10"

EXISTING CEILING  
 HUR. OUT FOR DUCT  
 HUR. LT  
 WALL STRIP  
 CABINETS  
 REFRIGERATOR  
 RANGE HOOD  
 CH. CLOSET  
 RANGE  
 LOWER CASE  
 2" JOISTS @ 16" O.C.



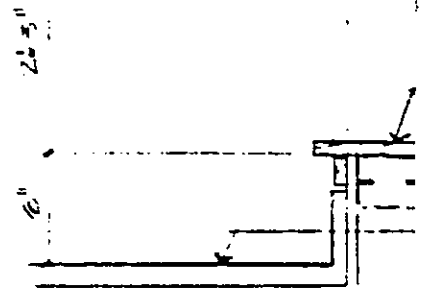
EXISTING CEILING  
 FLOOR JOIST  
 HUR. OUT FOR DUCT  
 WALL STRIP  
 CABINETS  
 SINK  
 UPPER CASE CABINET  
 DISHWASHER  
 2" JOISTS @ 16" O.C.

UNIT 9

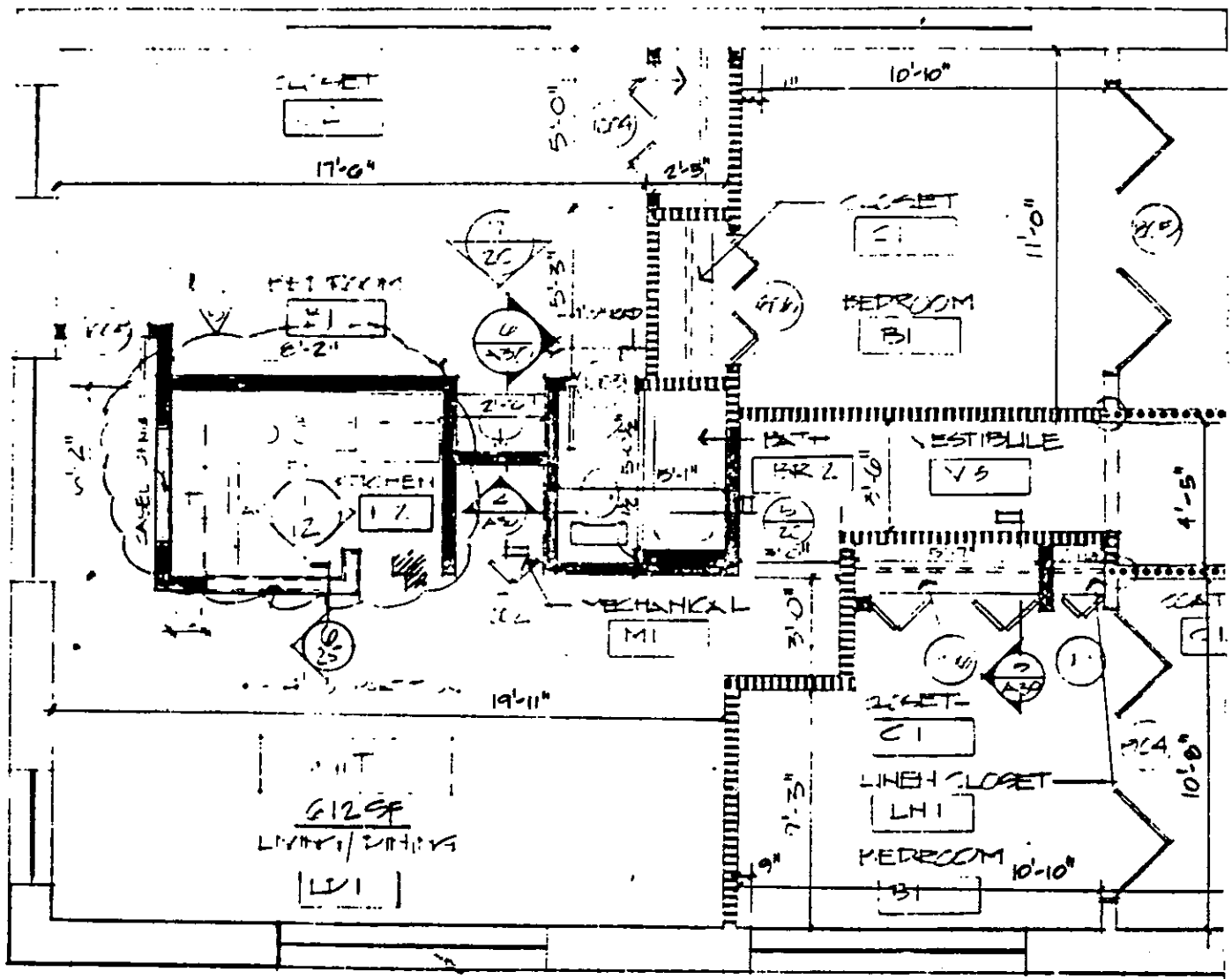


FLOOR CUT AS  
 REQ'D FOR DUCT  
 (SEE HVAC DWG)

1) KITCHEN ELEVATIONS  
 2) 4" = 1'-0"



4) DETAIL @ KITCHEN HOLE 2'-0" D



12) PLAN @ RD FLOOR - 309 MEETING STREET  
 1/4" = 1'-0"

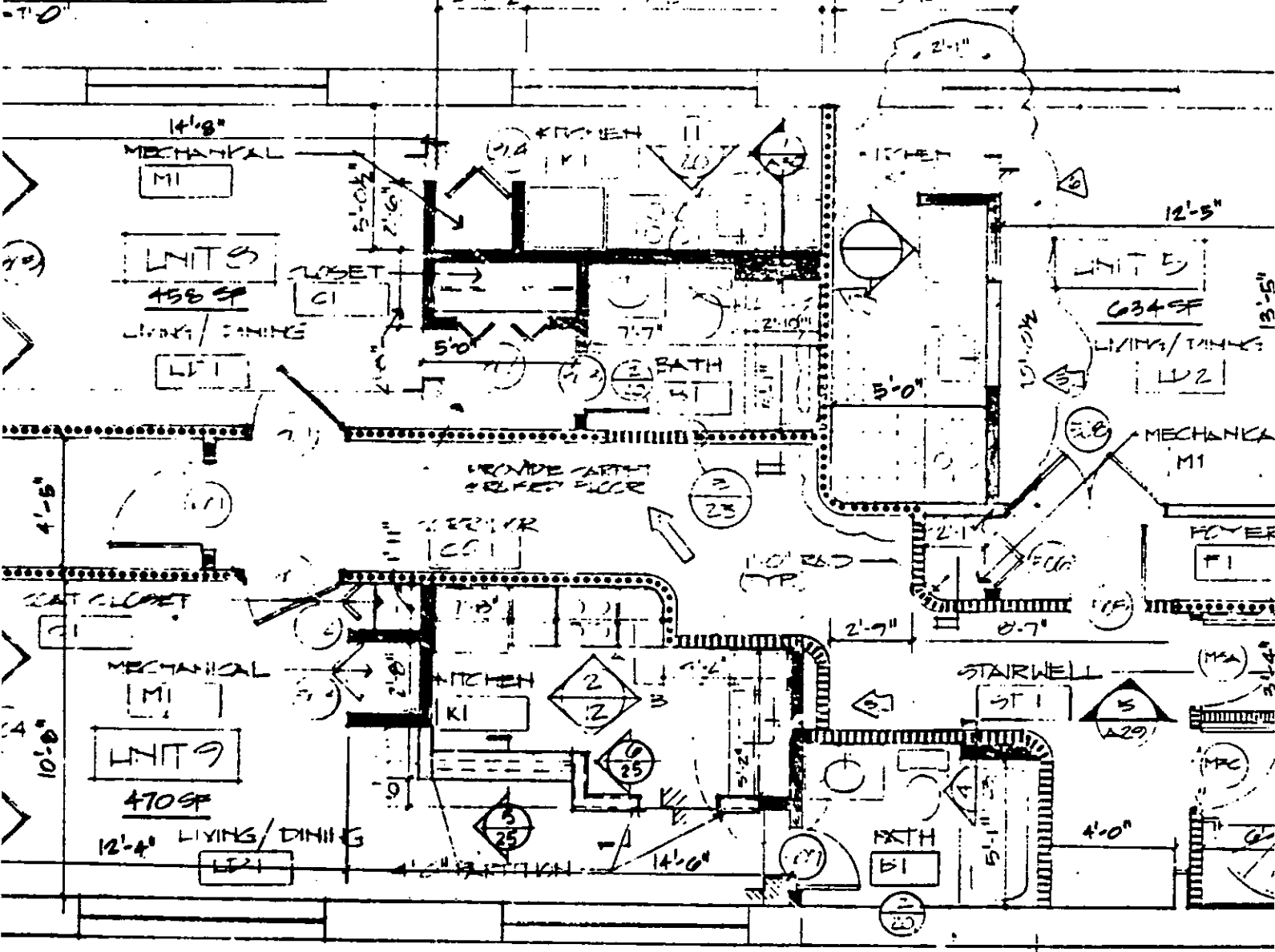
1 1/2" STD WID TRIM

2  
1/2" = 1'-0"

1 1/2" STD WID SHELF

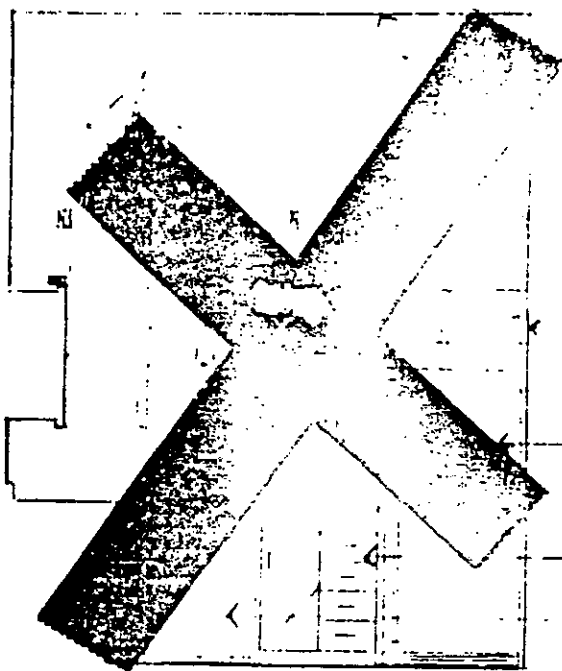
CENTERTOP

KITCHEN OPNG.



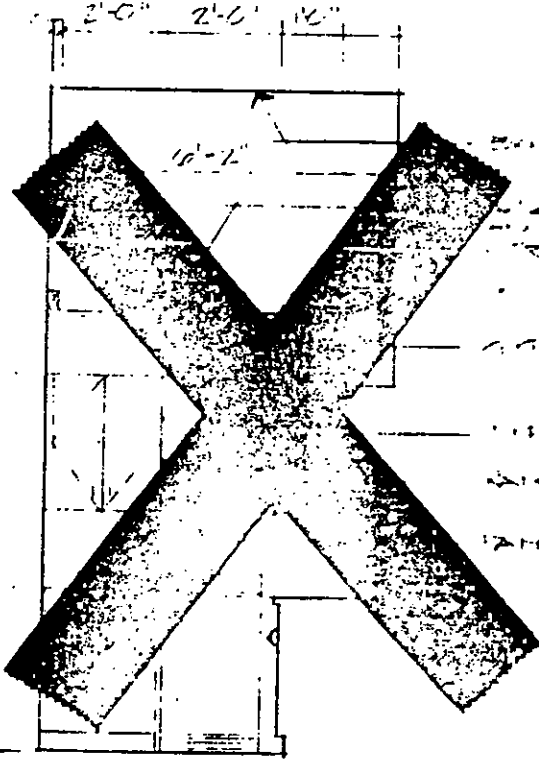
14'-8" MECHANICAL M1  
 UNIT 5 634 SF  
 LIVING/DINING L12  
 MECHANICAL M1  
 FLOOR  
 UNIT 9 470 SF  
 12'-4" LIVING/DINING L11  
 UNIT 10 458 SF  
 LIVING/DINING L10  
 MECHANICAL M1  
 BATH  
 KITCHEN  
 MECHANICAL M1  
 STARWELL  
 ST 1  
 4'-0"  
 7'-7"





1" FILLER B.C.F.  
 2" FILLER B.C.F.  
 3" FILLER B.C.F.  
 4" FILLER B.C.F.  
 5" FILLER B.C.F.  
 6" FILLER B.C.F.  
 7" FILLER B.C.F.  
 8" FILLER B.C.F.  
 9" FILLER B.C.F.  
 10" FILLER B.C.F.  
 11" FILLER B.C.F.  
 12" FILLER B.C.F.

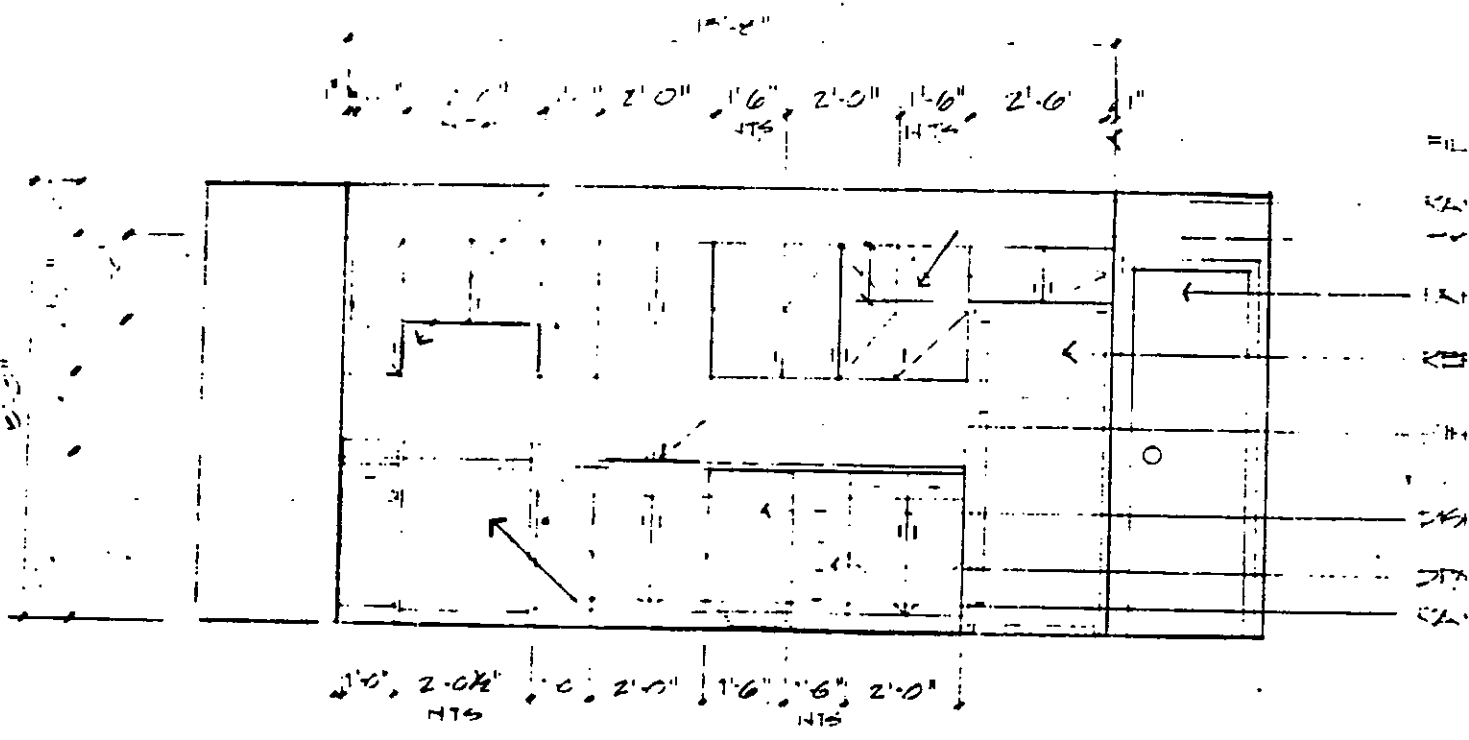
4 KITCHEN ELEVATION - UNITS  
 12 SCALE 1/4" = 1'-0"



1" FILLER B.C.F.  
 2" FILLER B.C.F.  
 3" FILLER B.C.F.  
 4" FILLER B.C.F.  
 5" FILLER B.C.F.  
 6" FILLER B.C.F.  
 7" FILLER B.C.F.  
 8" FILLER B.C.F.  
 9" FILLER B.C.F.  
 10" FILLER B.C.F.  
 11" FILLER B.C.F.  
 12" FILLER B.C.F.

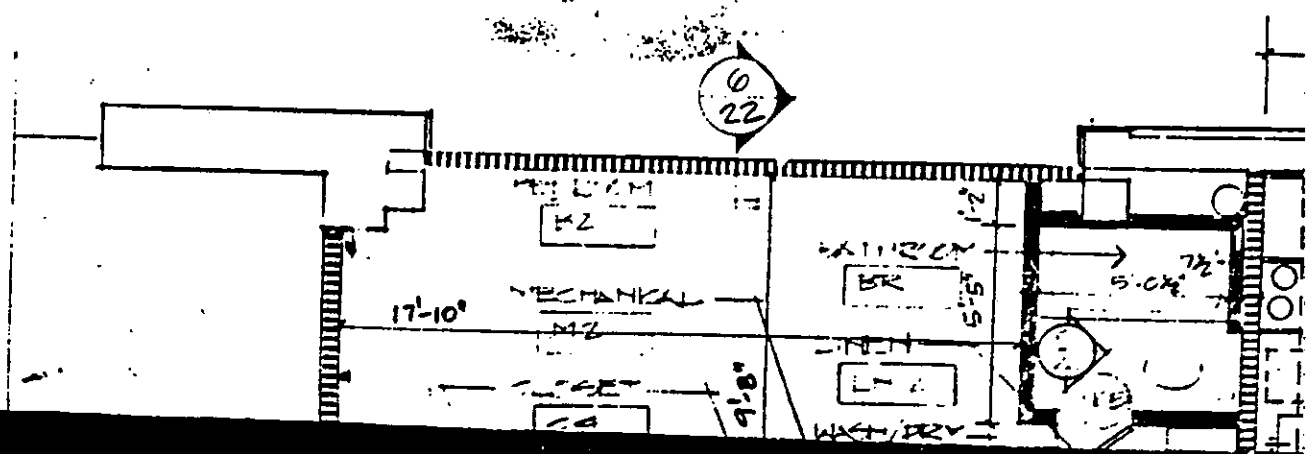
KITCHEN ELEVATION (UNIT 4)

SHT: 4 2/23/04



1  
12  
KITCHEN ELEVATION

ment Continues  
Manual Search



BKH 142PG892

STICK UP

SAVED TO  
TOP CABINETS

STICK

REFRIGERATOR

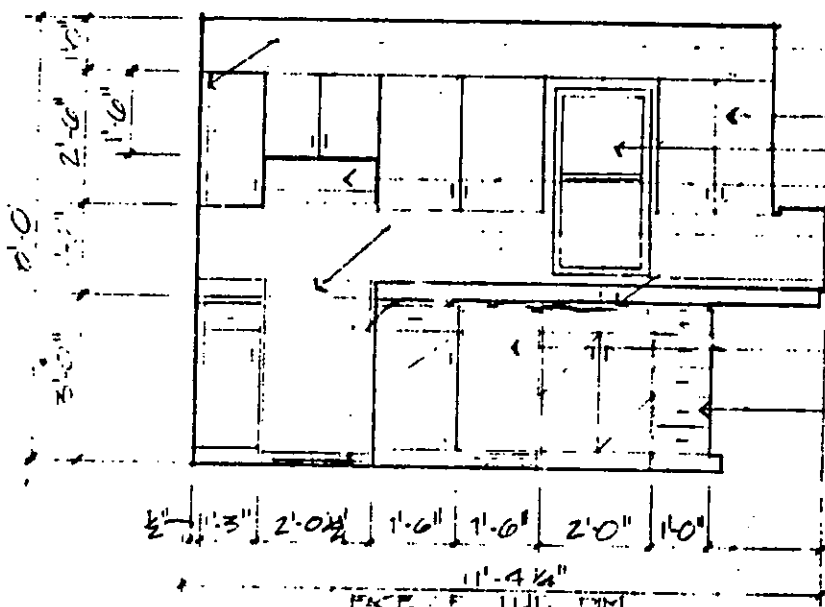
STICK

DISHWASHER

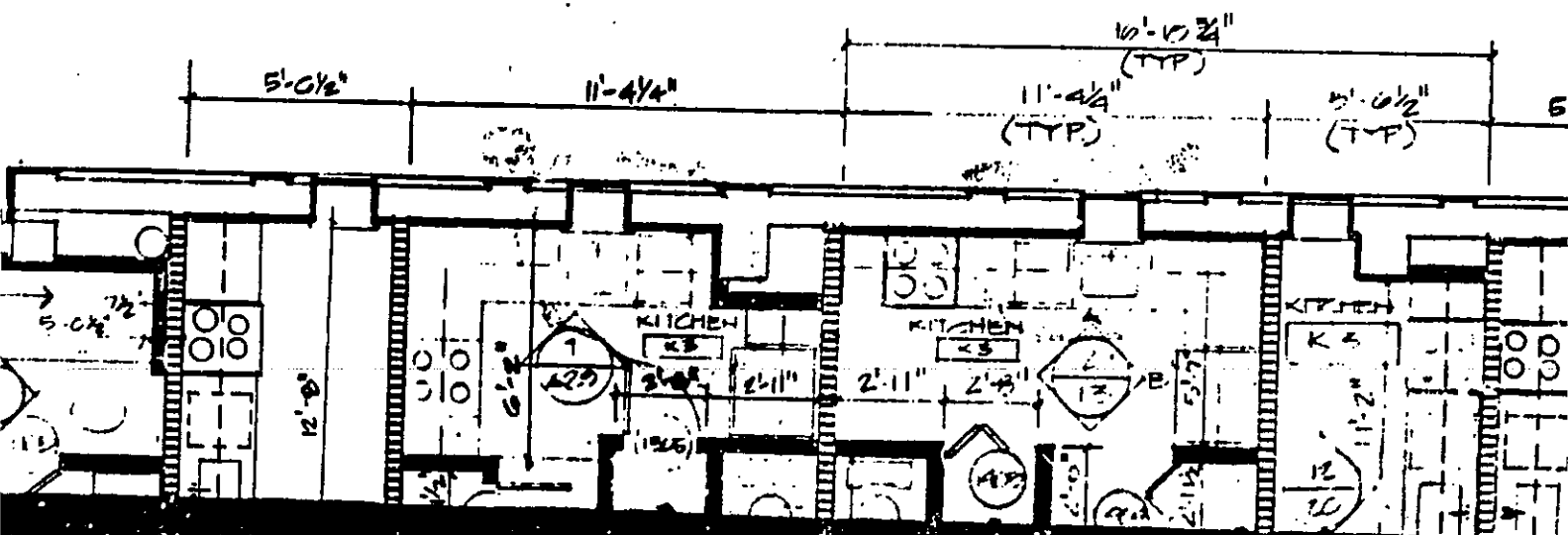
DINING BASE

CASE

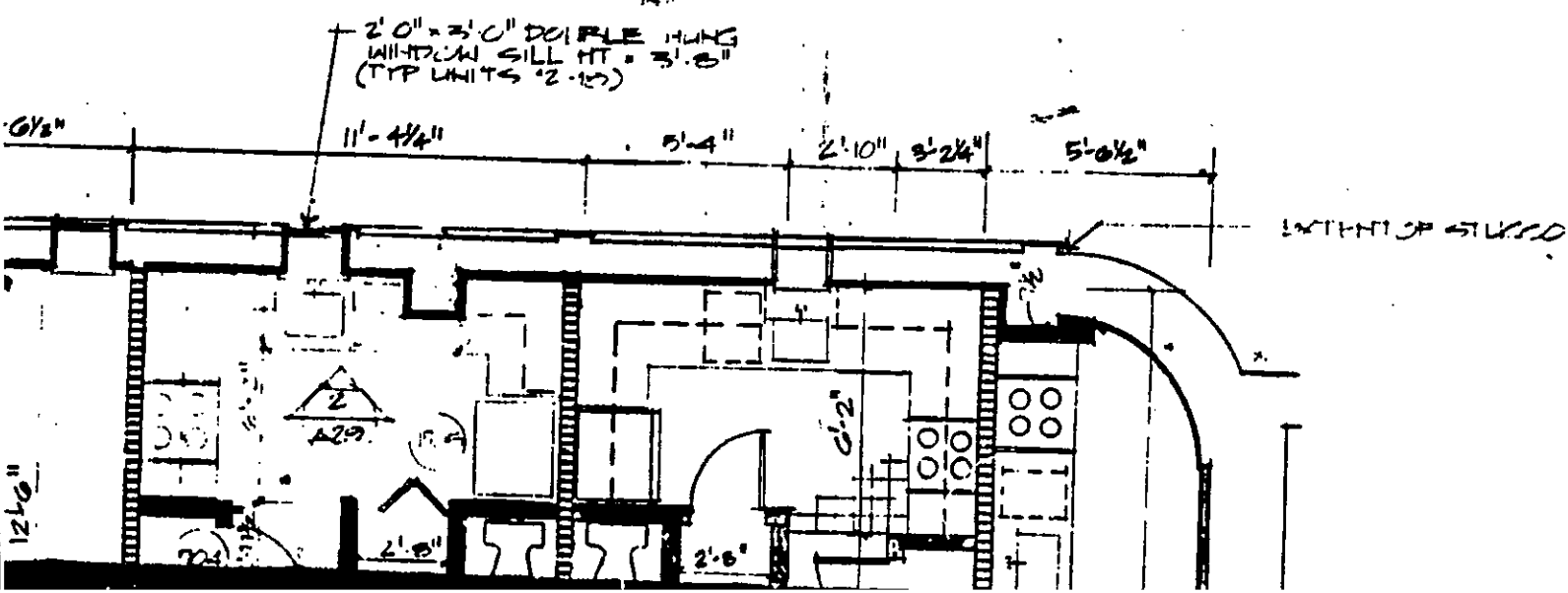
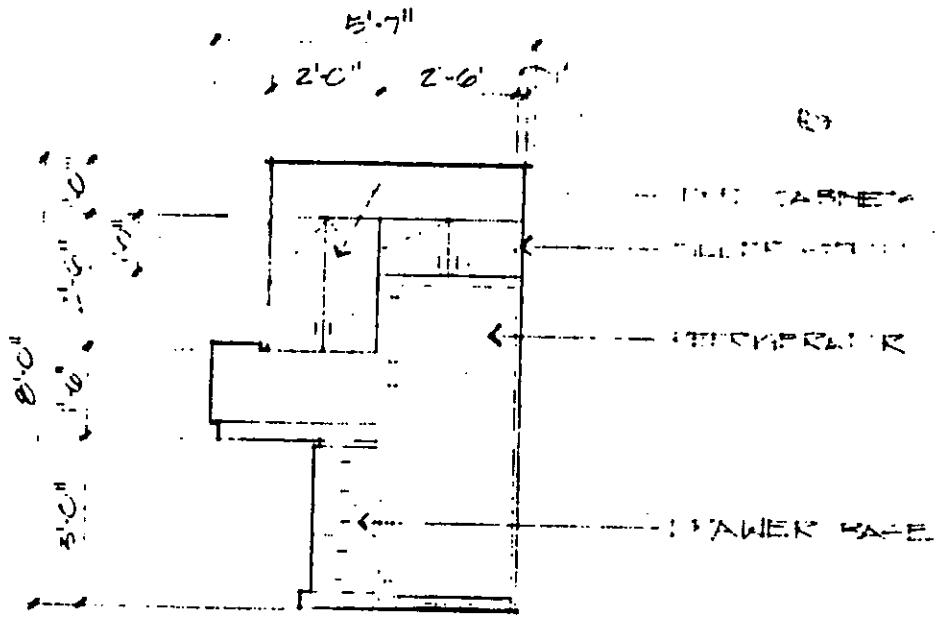
1'-3 1/2" 2'-0" 2'-0" 2'-0" 2'-0"



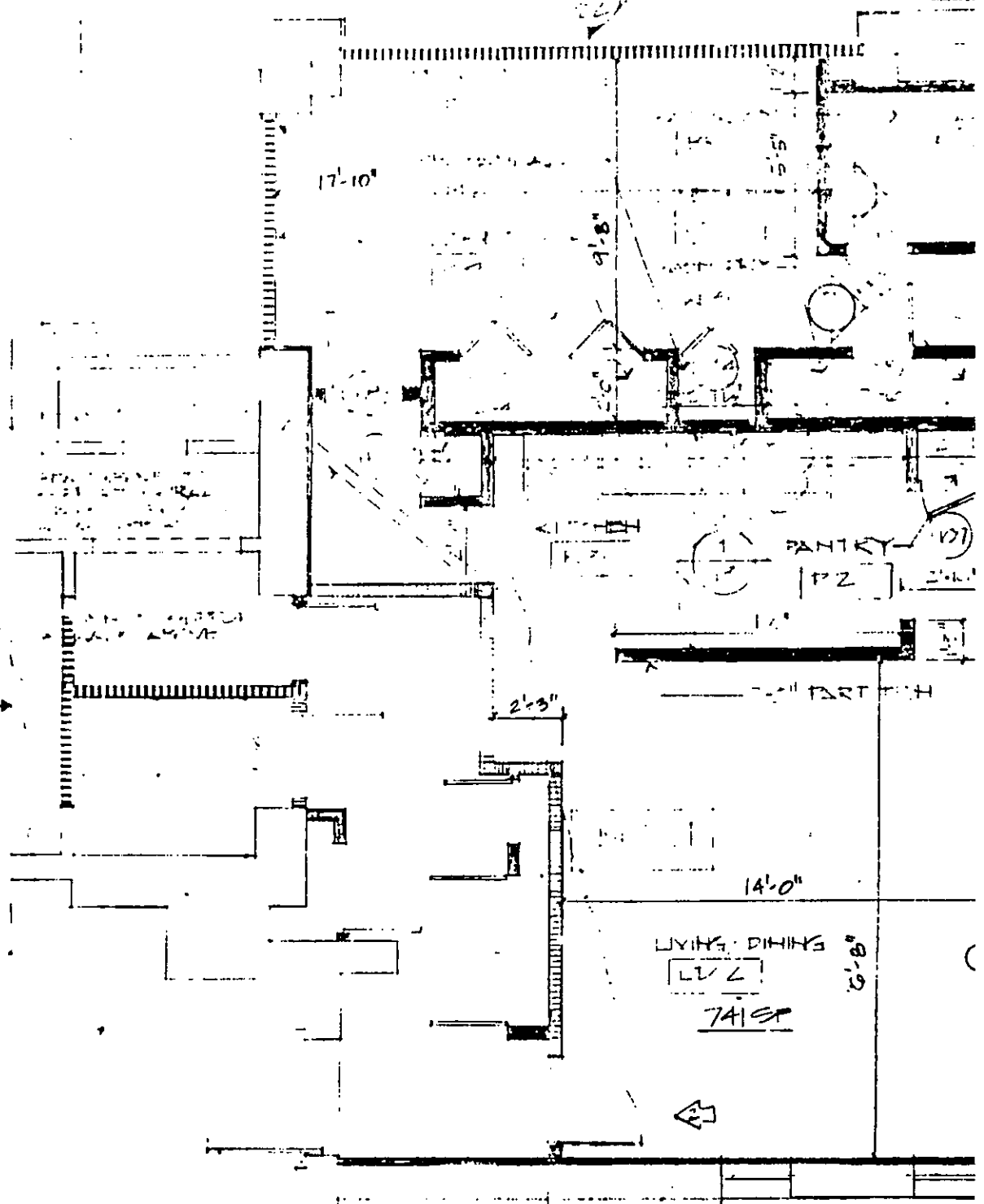
13 KITCHEN ELEVATIONS  
11'-10"



- FLOOR FINISH
- WALL FINISH
- DOUBLE HUNG WINDOW
- CASE
- DOOR
- SINK
- WATER TAP

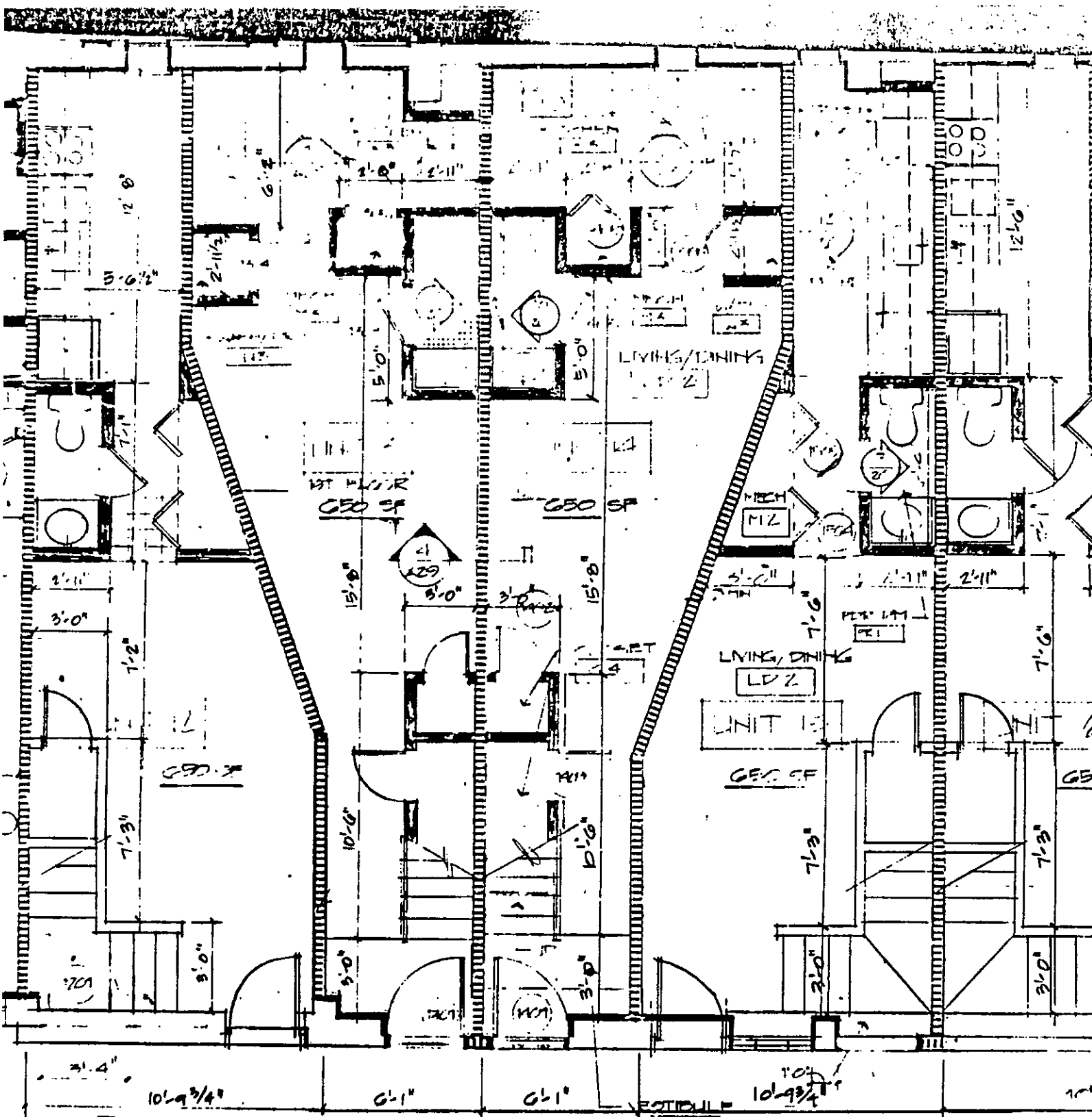


SEE PLAN AT  
REAR OF BUILDING



3' PLAN @ 1ST FLOOR  
 12' 4" 309 MEETING STREET



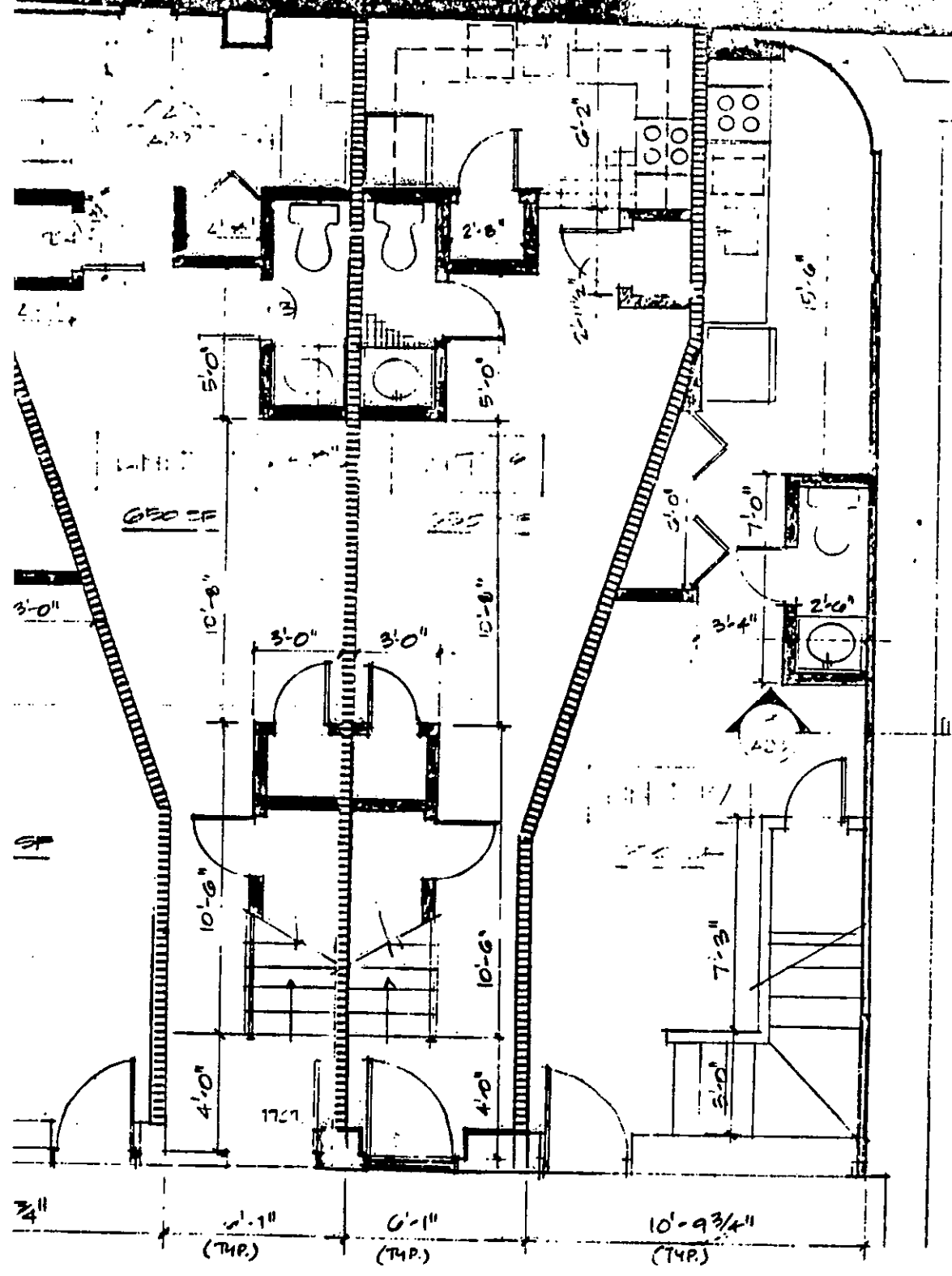


NOTE:  
ELEVATION TO LEVEL  
EXISTING SILL

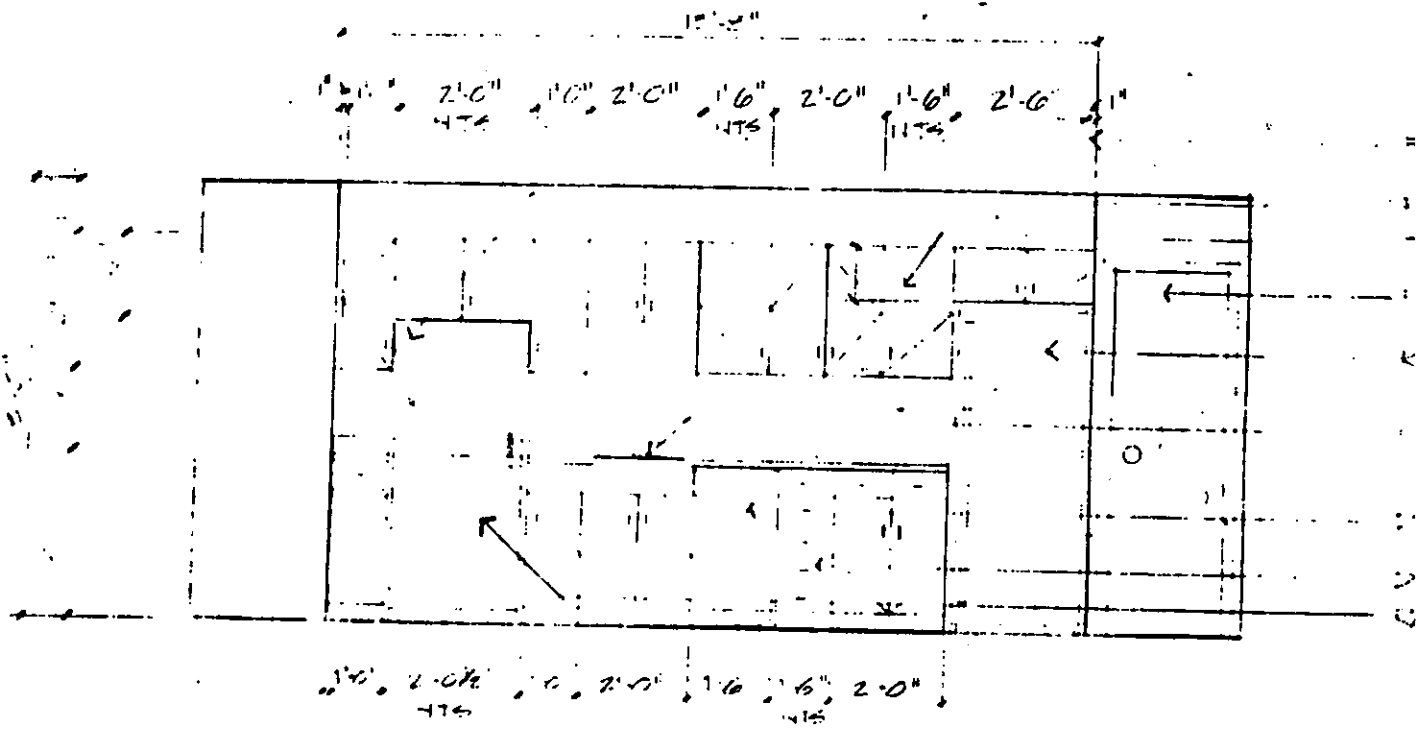
$10'-9\frac{3}{4}"$

14

(74)

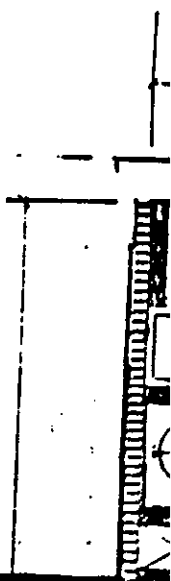


SHT 5 2/26/24



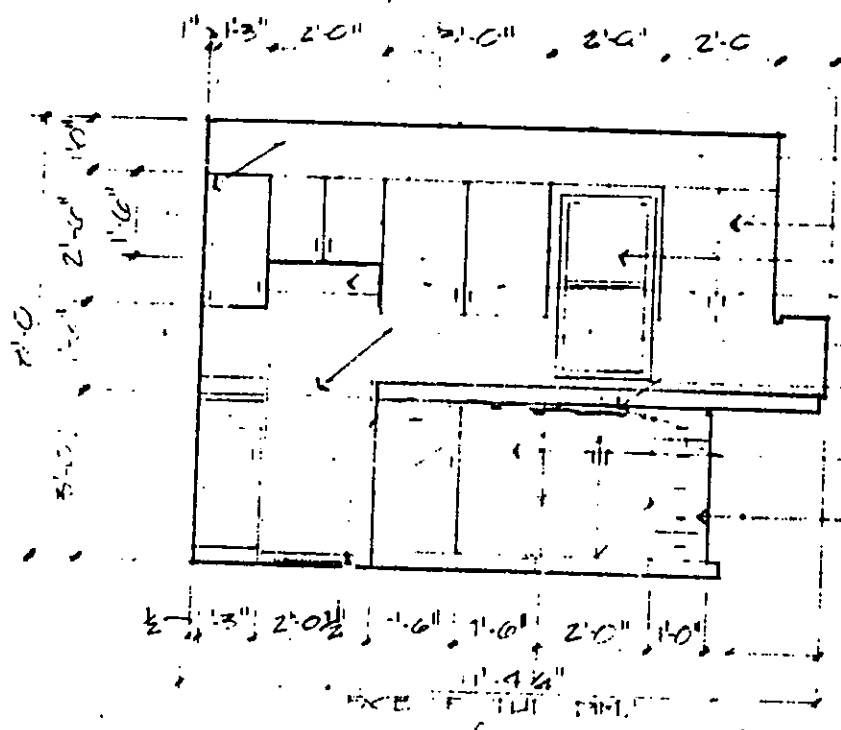
ELEVATION

Document Continues  
Use Manual Search

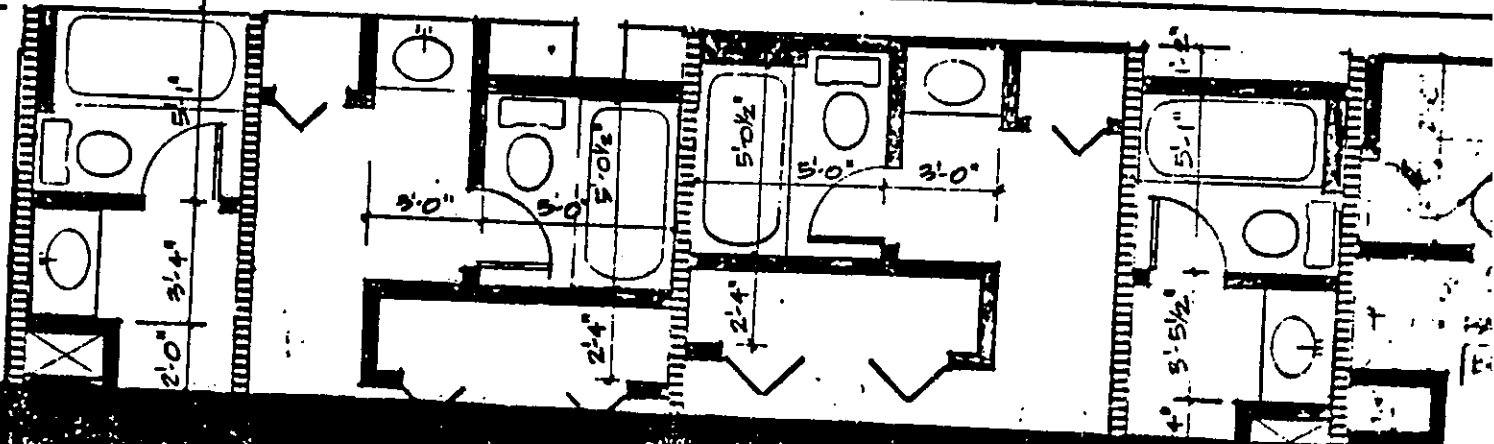
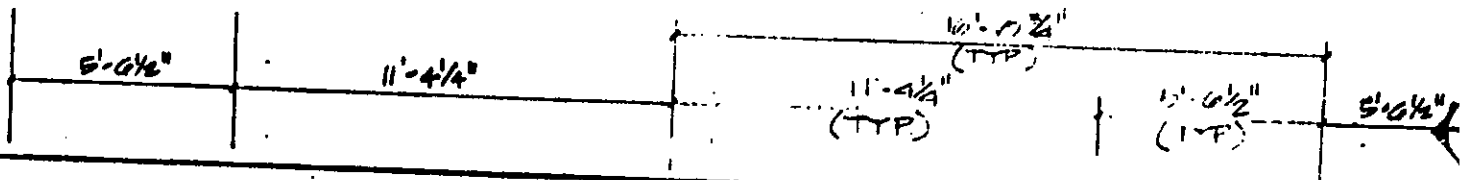




FLOOR STAIR  
 WALKWAY  
 WALKWAY NETS  
 WALKWAY  
 WALKWAY  
 WALKWAY  
 WALKWAY  
 WALKWAY  
 WALKWAY

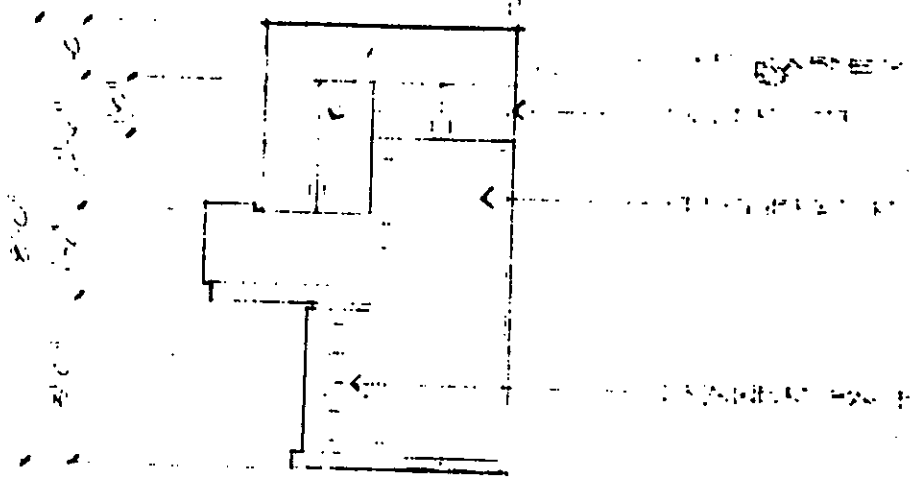


(13) KITCHEN ELEVATIONS  
 3/8" = 1'-0"

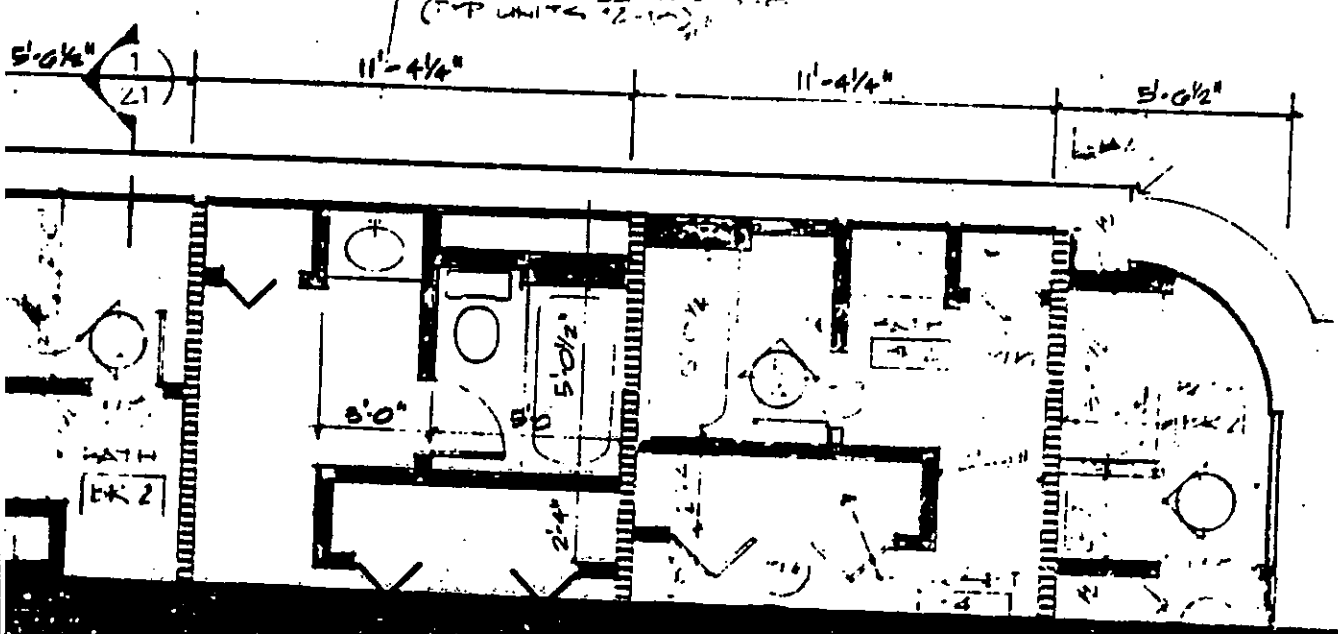


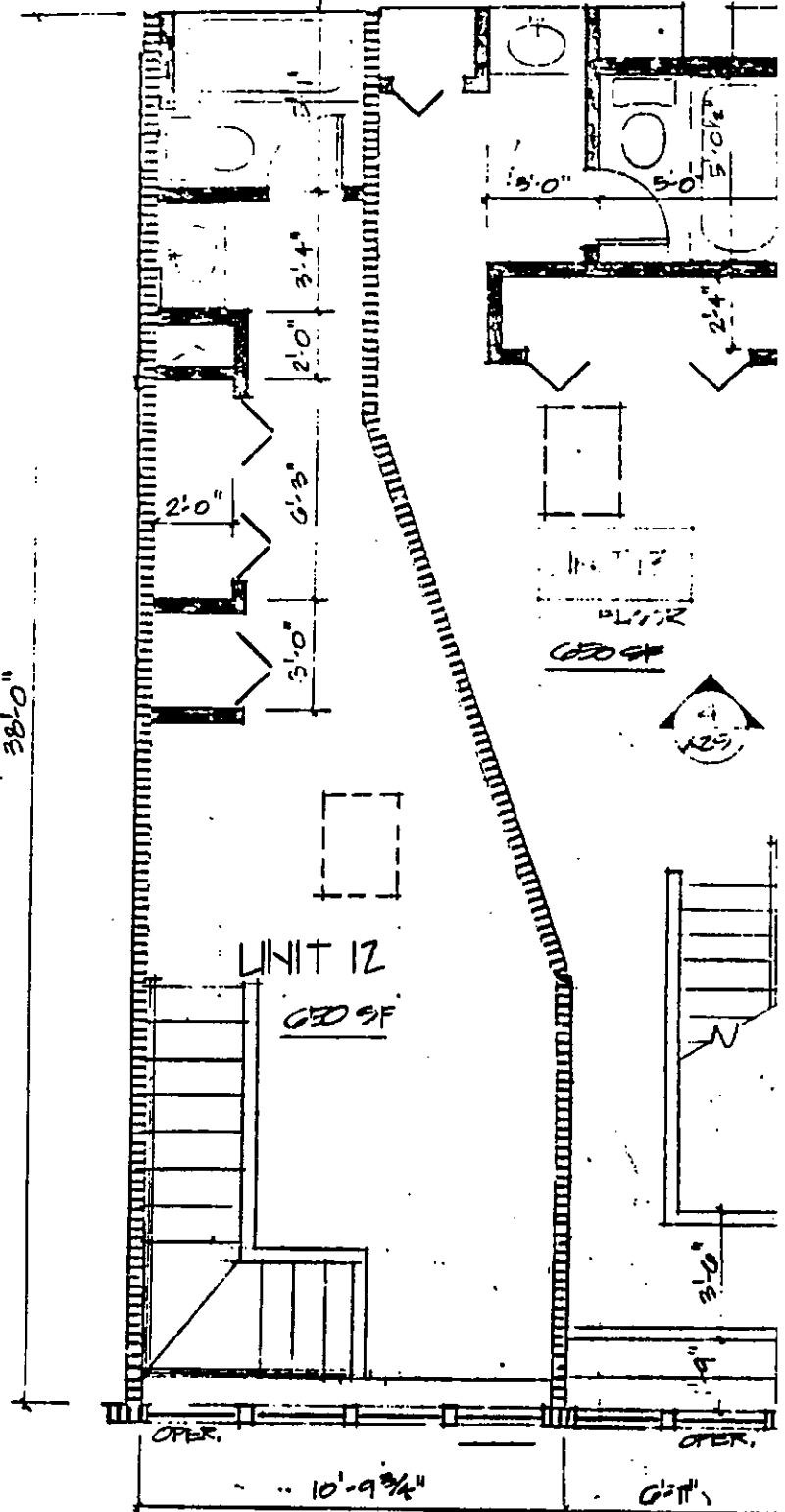
FLOOR PLAN  
WALLS  
DOORWAYS  
WINDERS  
PLUMBING  
ELECTRIC  
MECHANICAL  
ELEVATOR

8'-7"  
2'-0", 2'-0"



2'-0" x 2'-0" DOUBLE  
WINDOW SILL HT - 2'-2"  
(TYP UNITS 2-1/4")



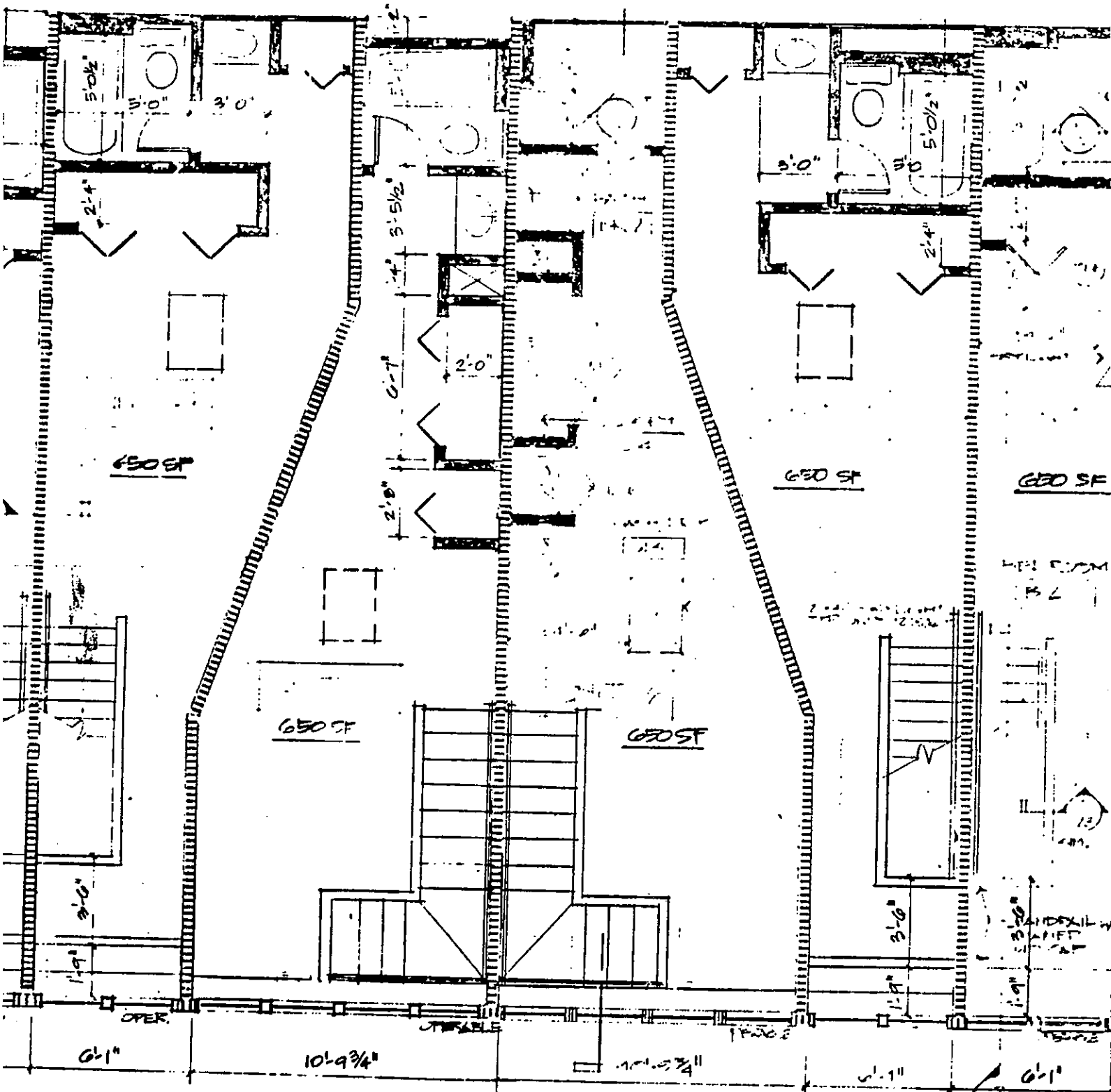


3  
12  
4 = 1'-0"  
309 MEETING STREET

PLAN: SECOND FLOOR - GARAGE

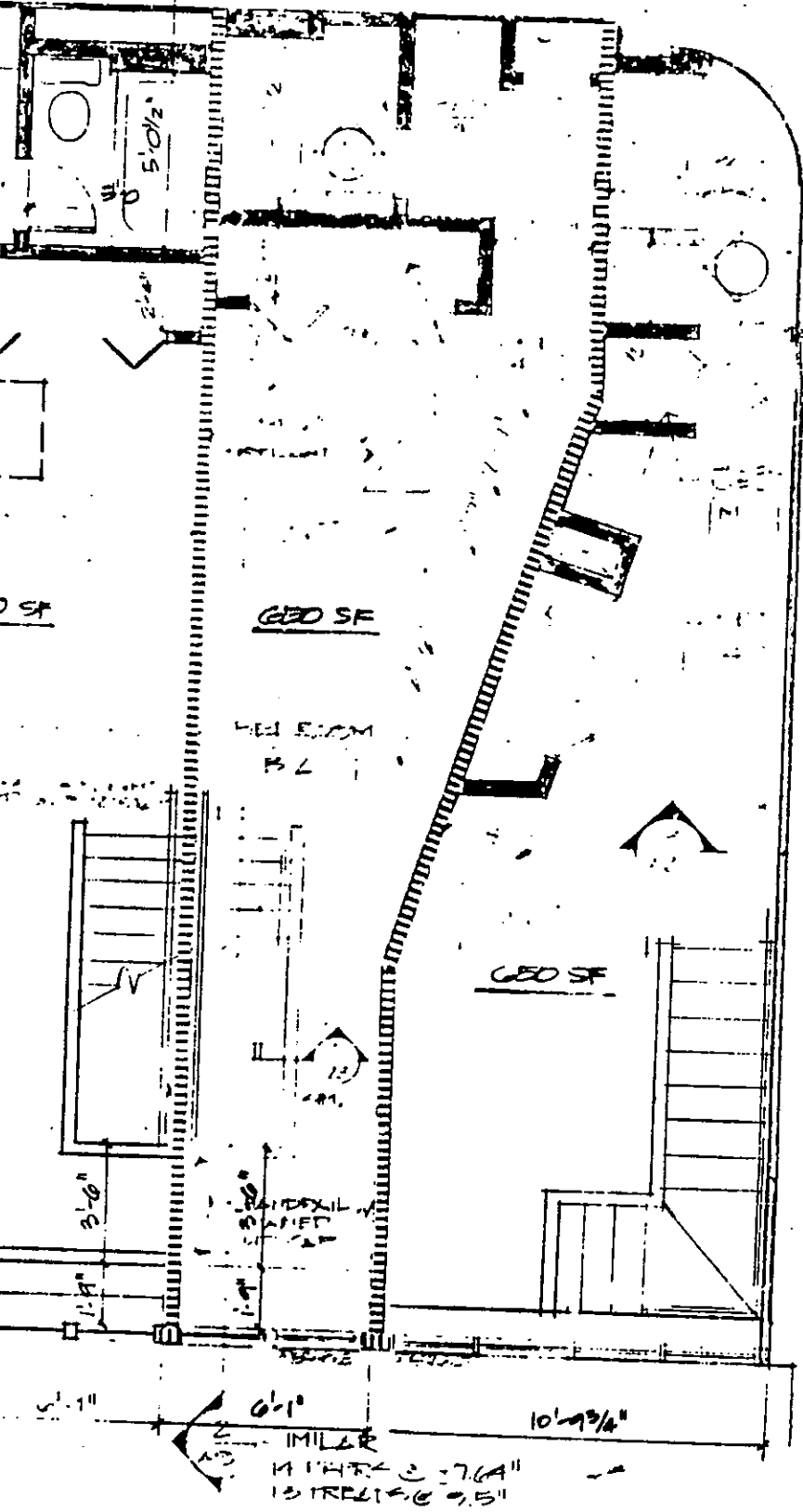
NOTE:  
FACTORY TO BE  
EXISTING SLD



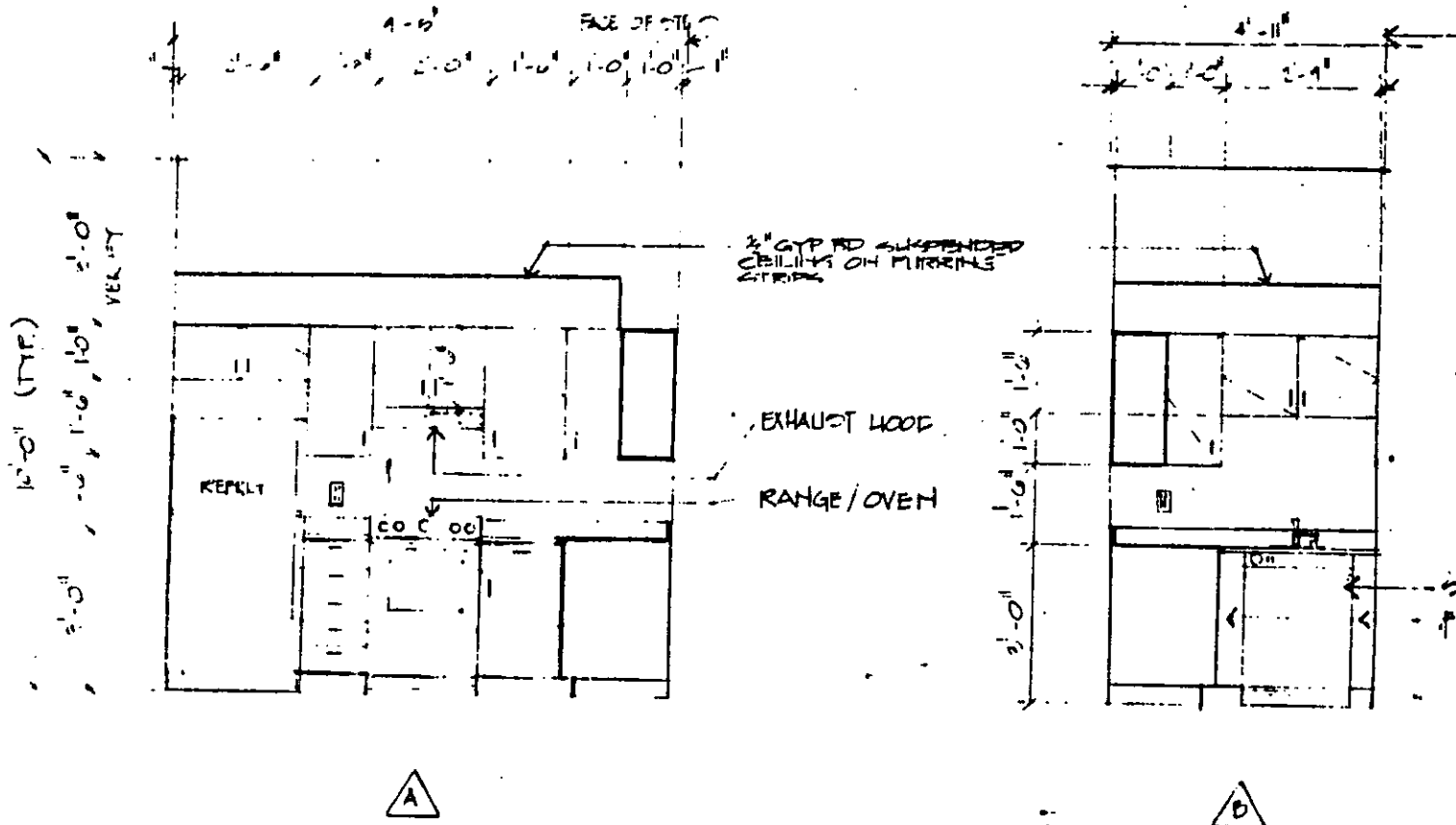


LEVEL

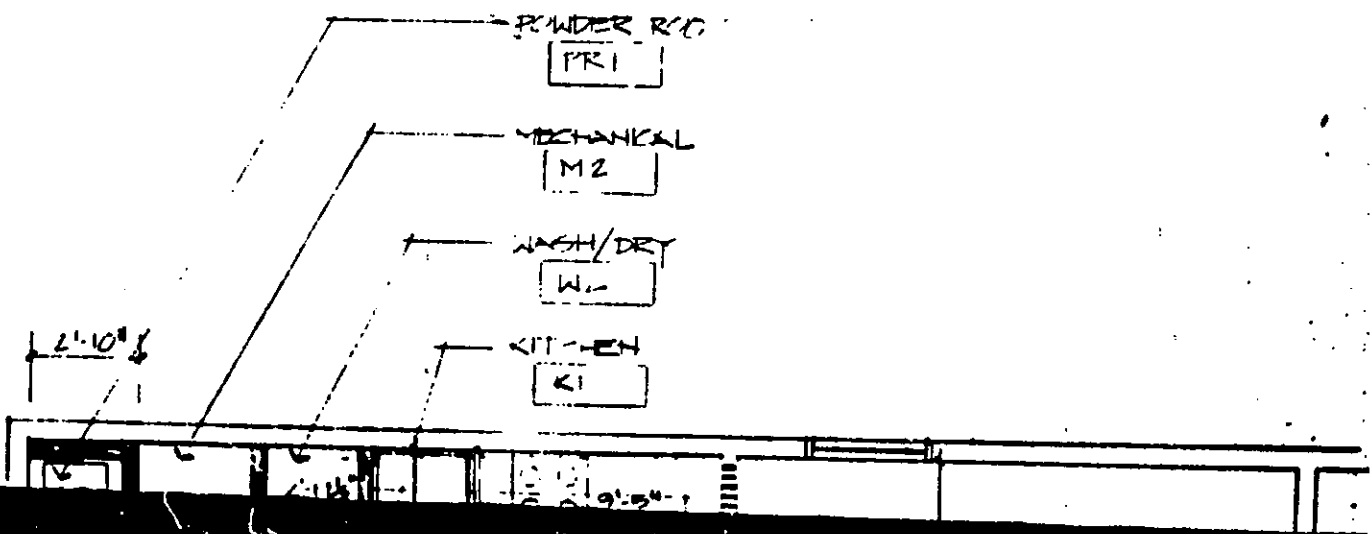
0'-1" MILLER  
14 INCH  
15 INCH



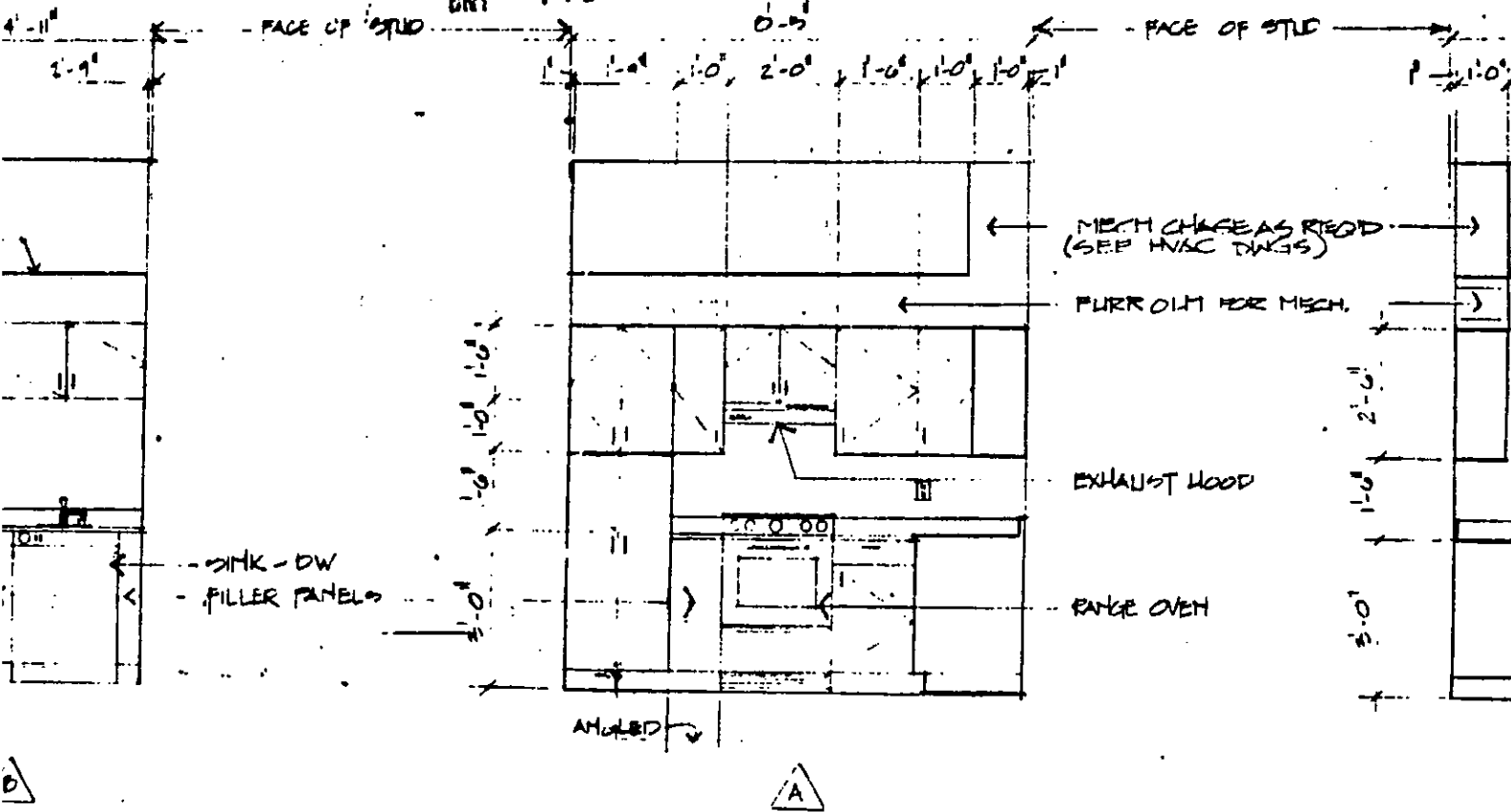
SHT. 6 12/26/82



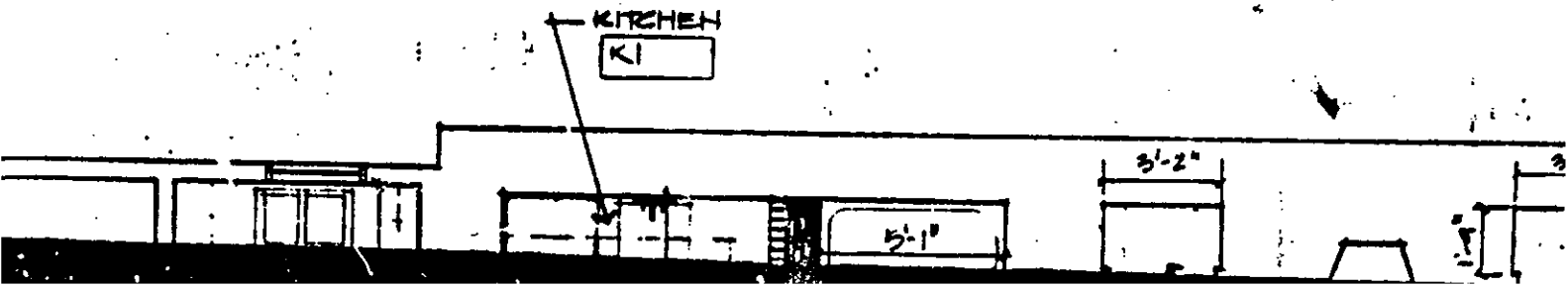
1/16 KITCHEN ELEVATIONS  
 1/2" = 1'-0"

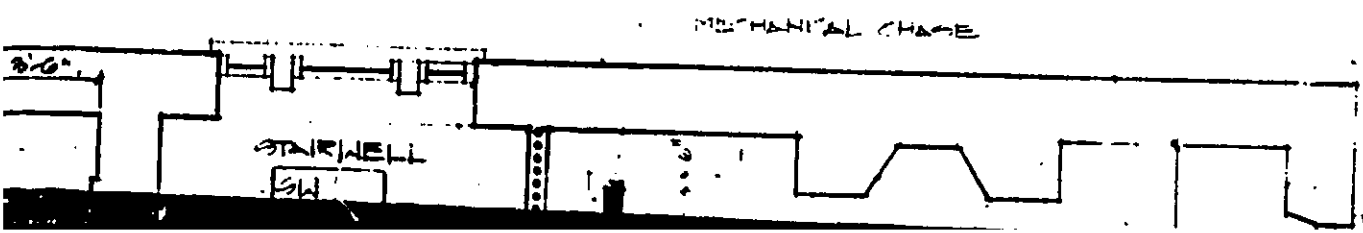
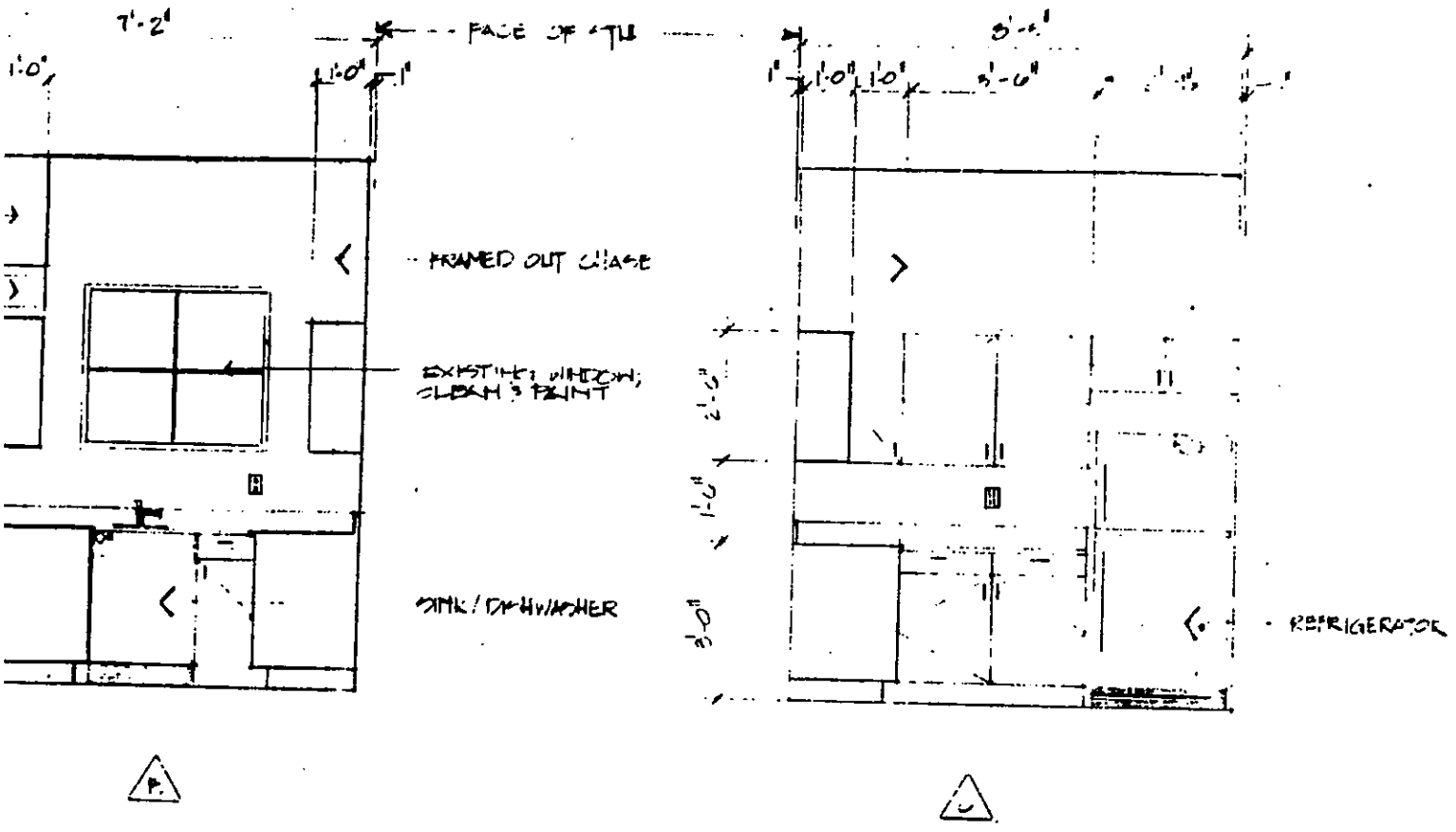


BKH 142 PG 894

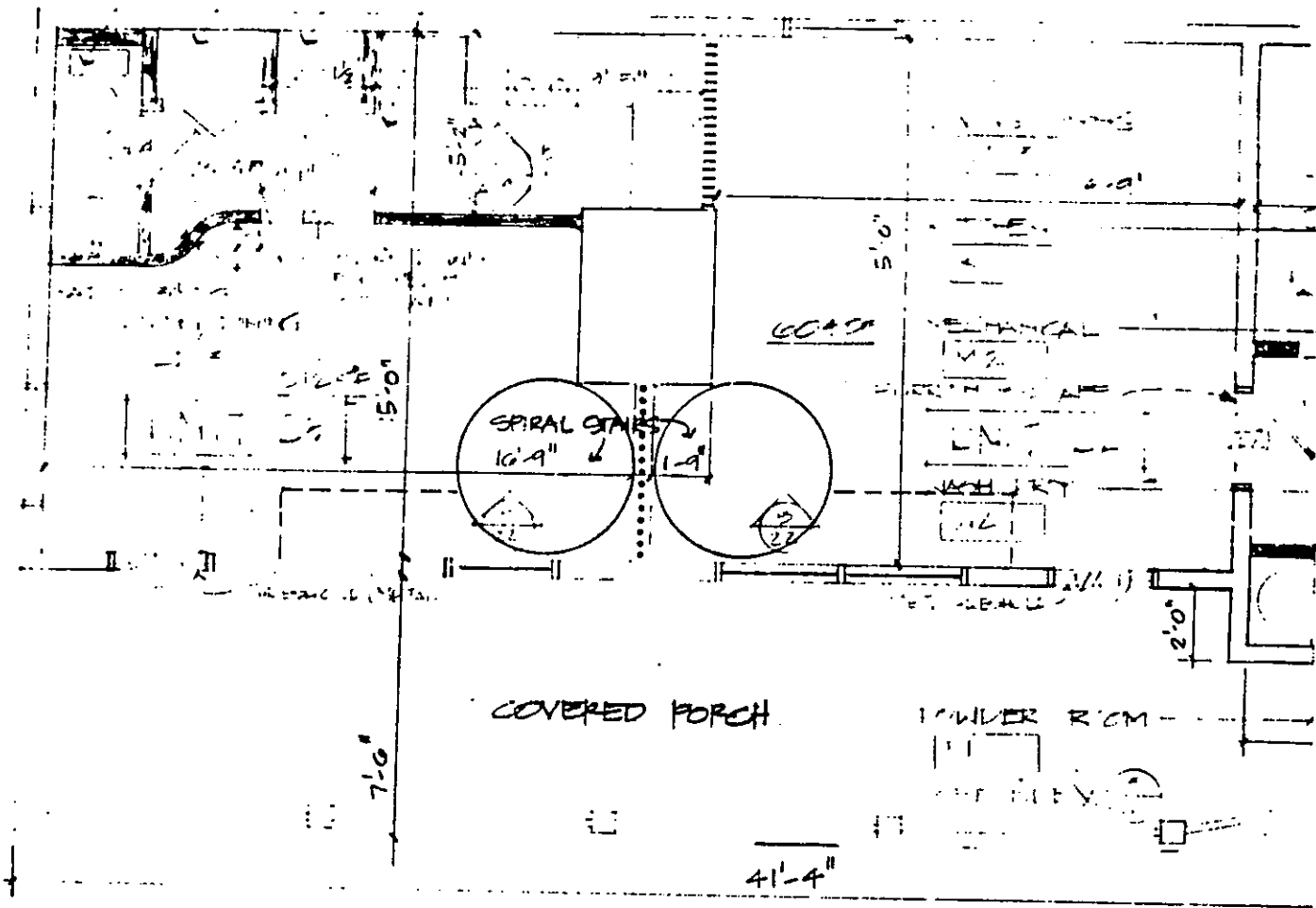


2 KITCHEN ELEVATIONS  
16 3/8" = 1'-0"









NOT TO SCALE  
 ALL DIMENSIONS IN FEET AND INCHES  
 1/4" = 1'-0"



PLAN OF 1ST FLOOR - HOUSE 313 MEETING STREET

