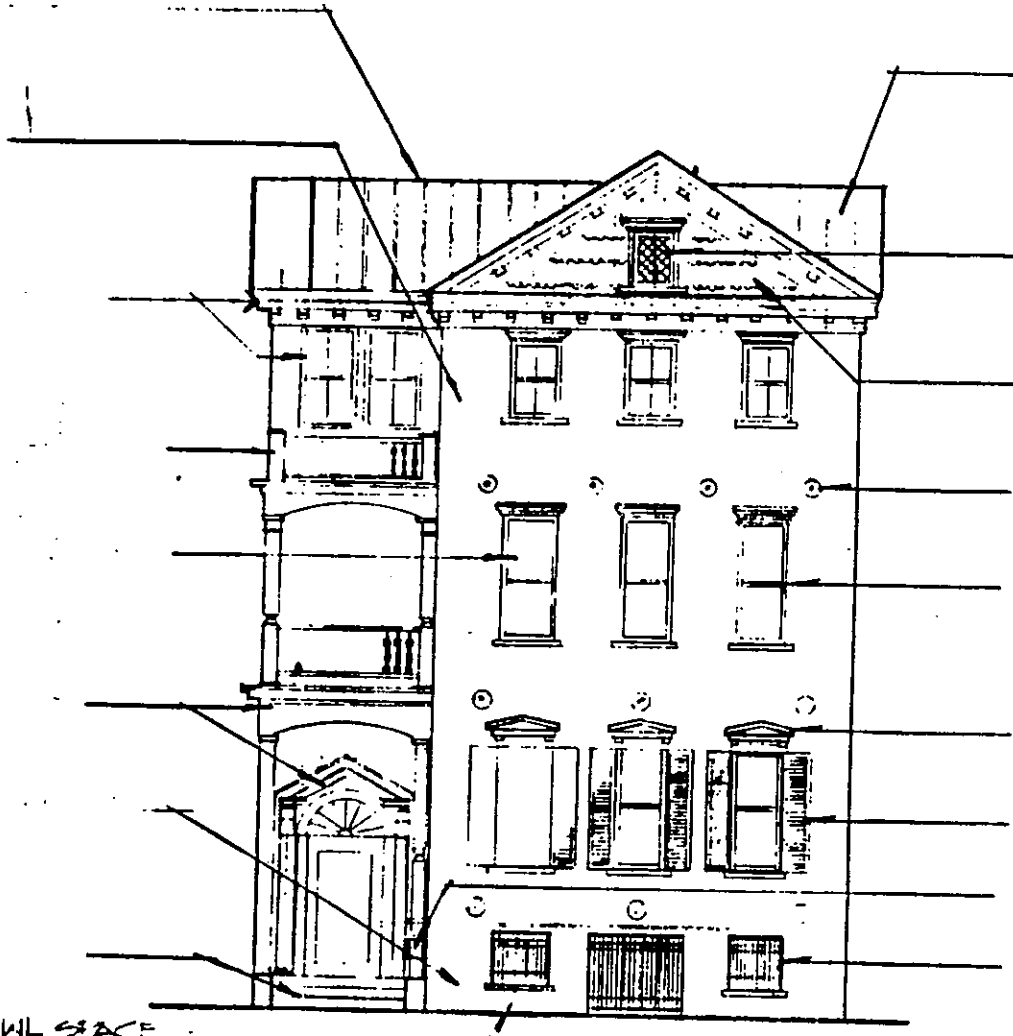




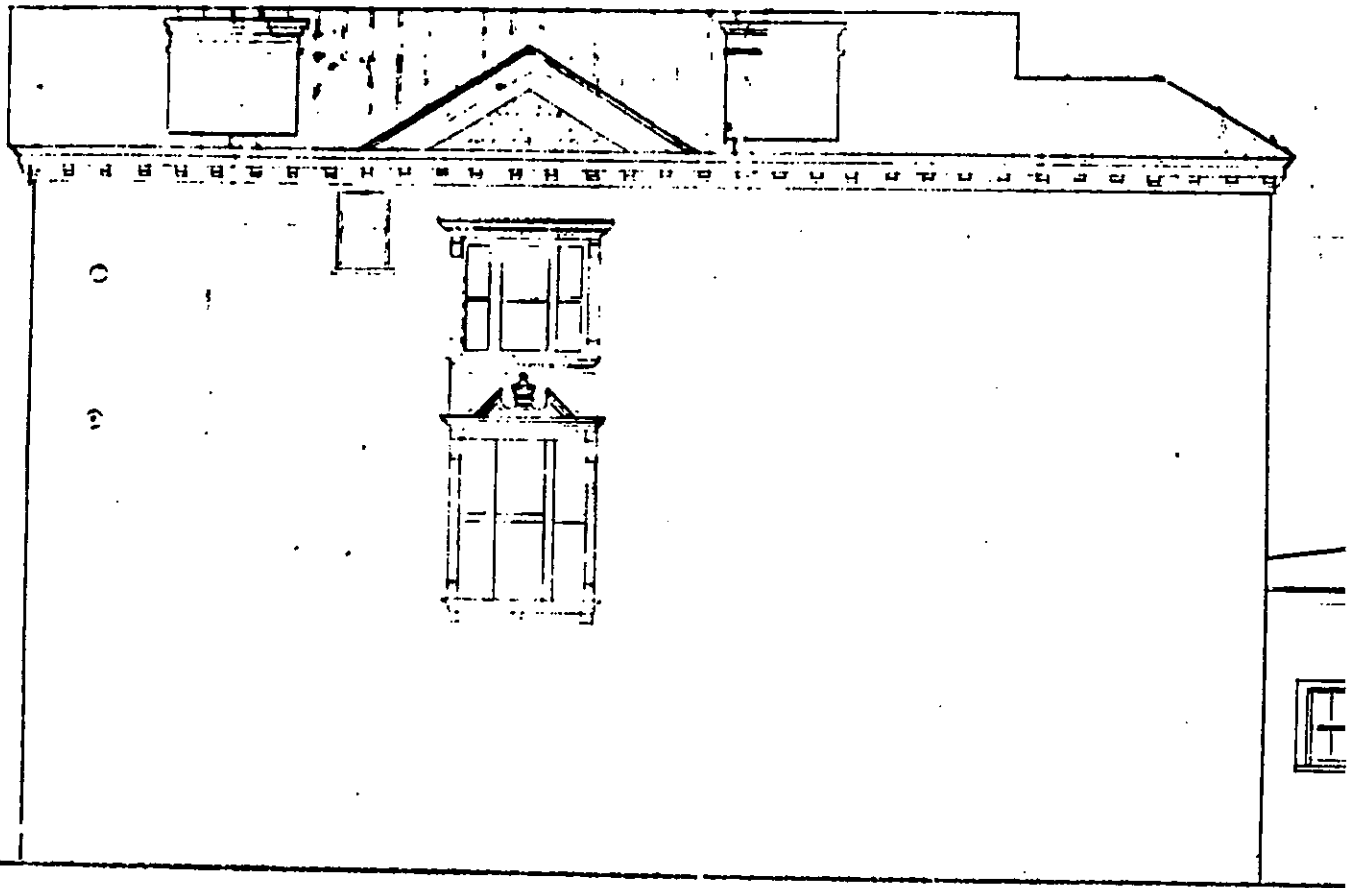
ING STREET



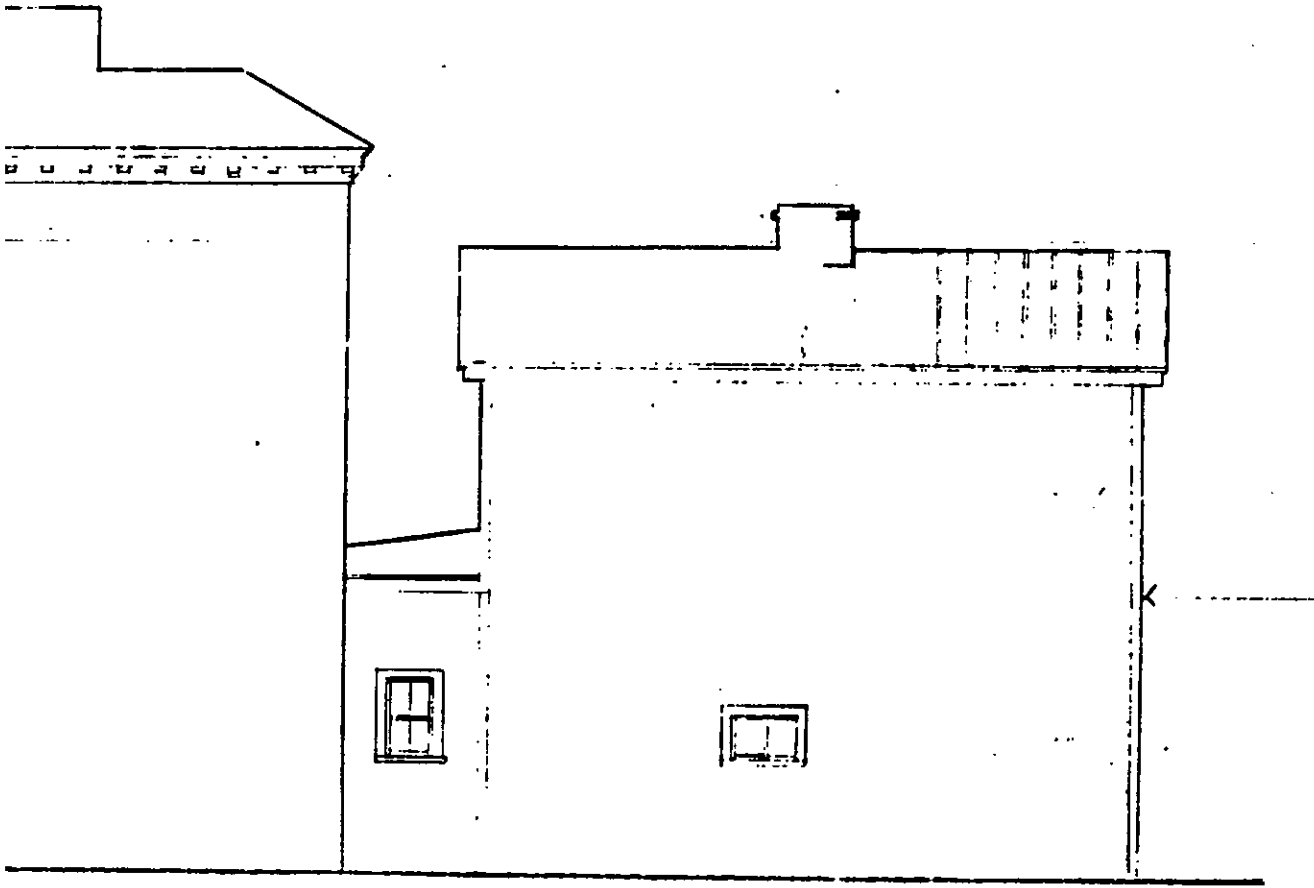
CRAWL SPACE

2  
1-7

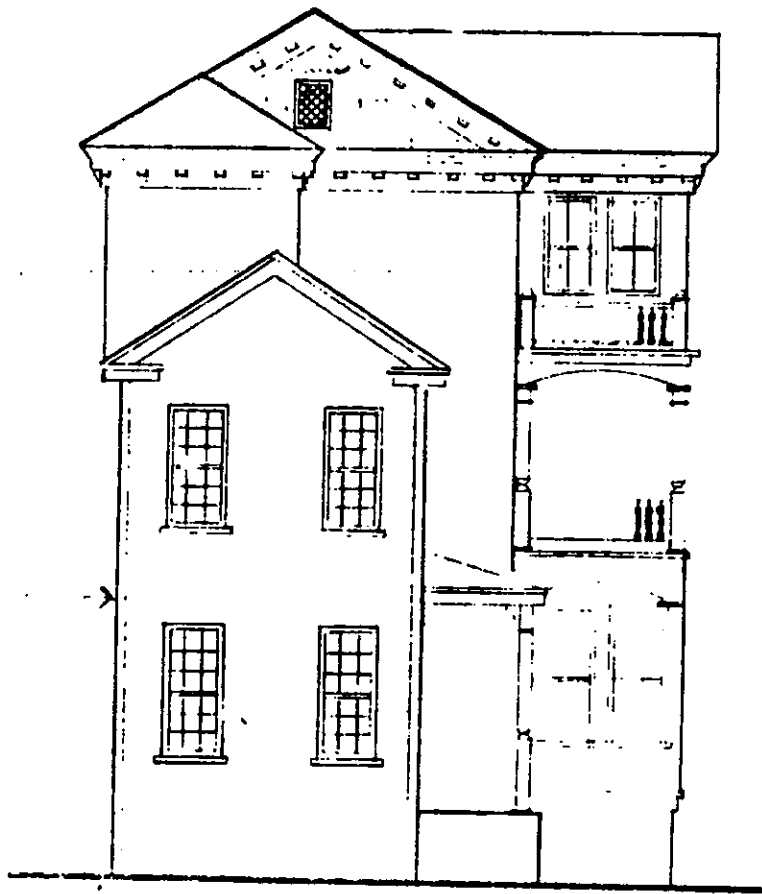
MEETING ST. ELEVATION 313 MEETING ST.  
 $\frac{1}{2}'' = 1'-0''$



2  
CALHOUN ST. ELEVATION (313 MEETING STREET)  
1/2" = 1'-0"

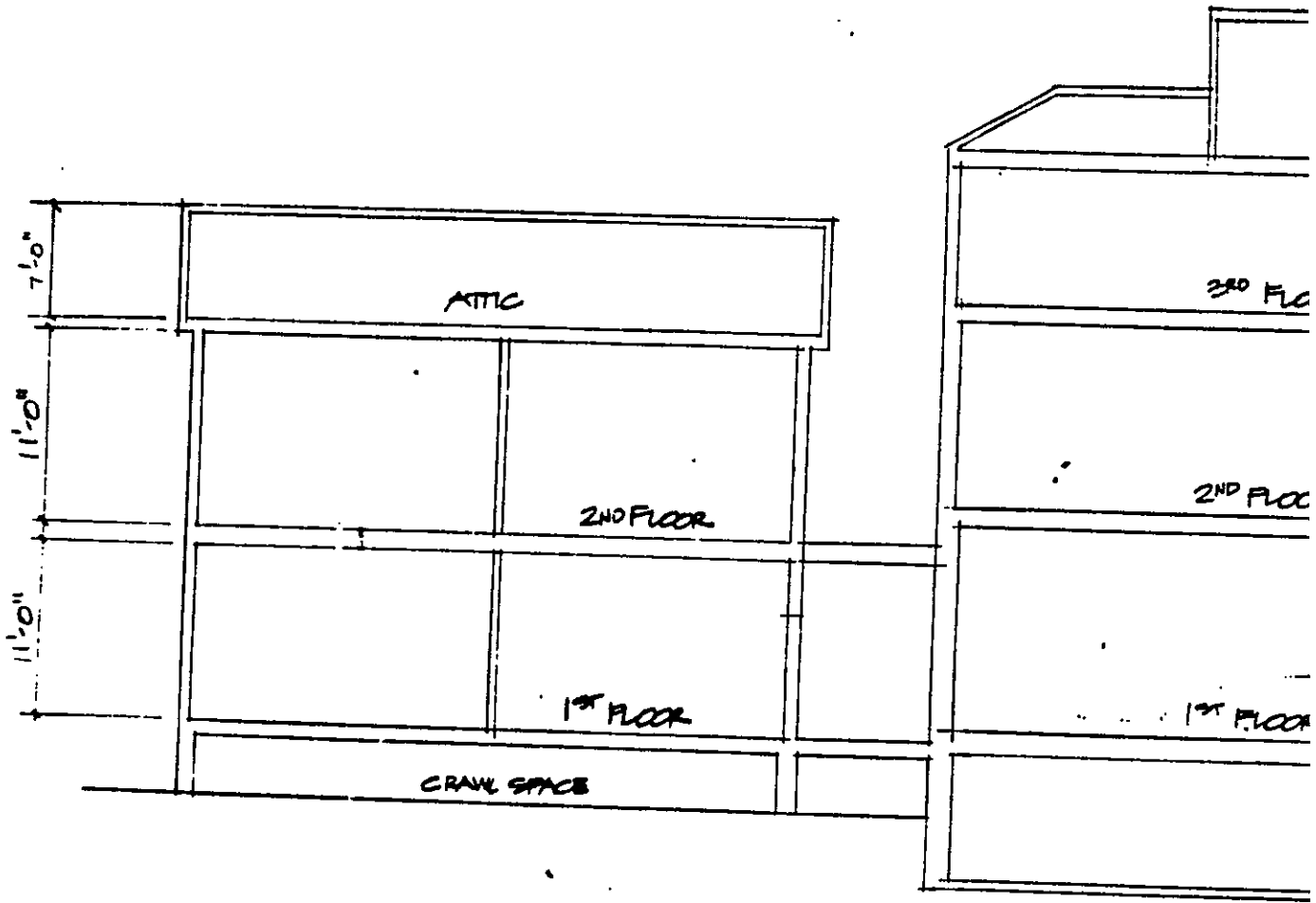


MEETING STREET)

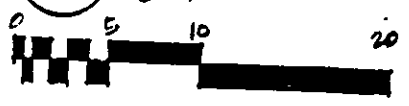


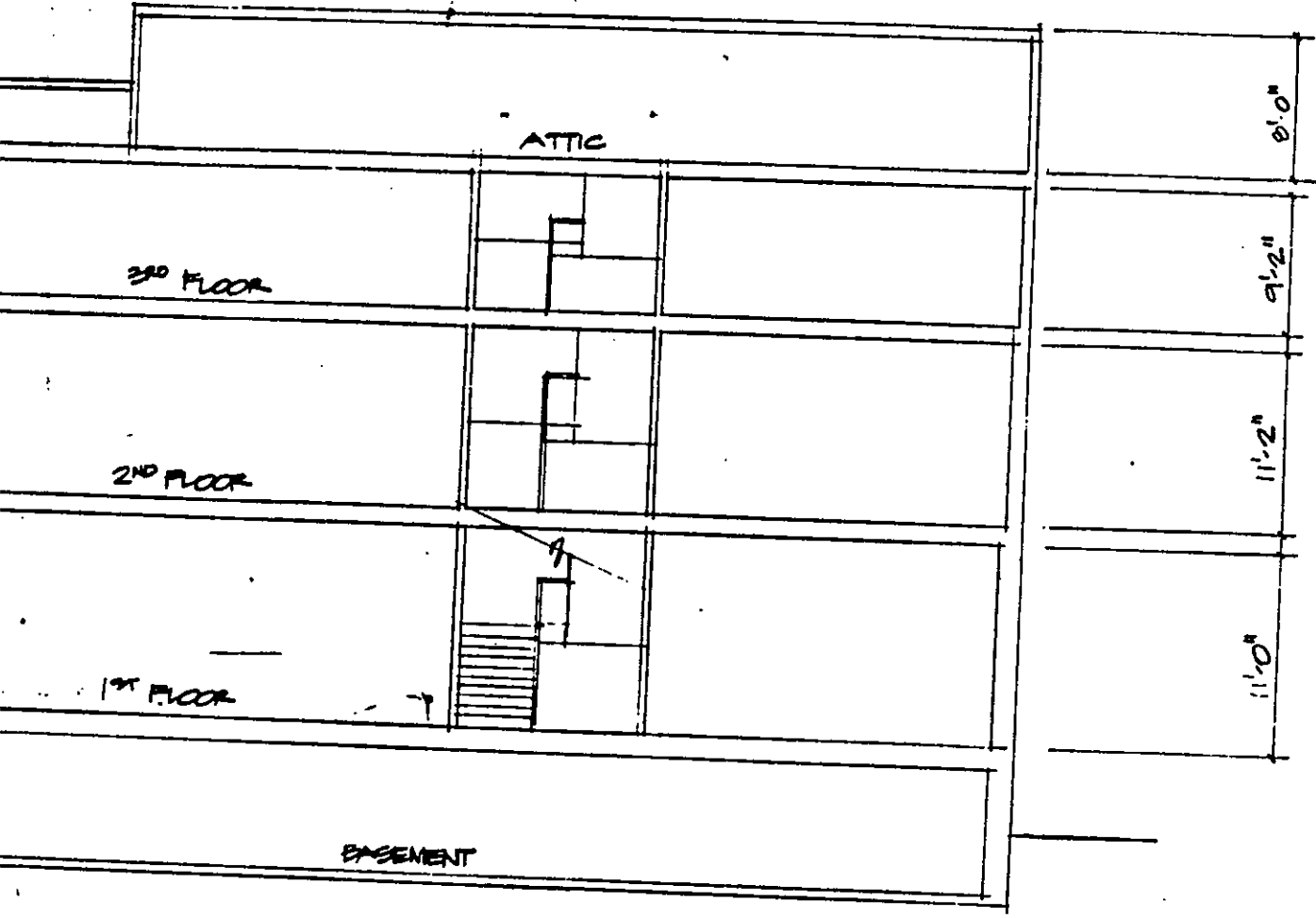
④ SIDE ELEVATION 313 MEETING ST.  
1/8" = 1'-0"

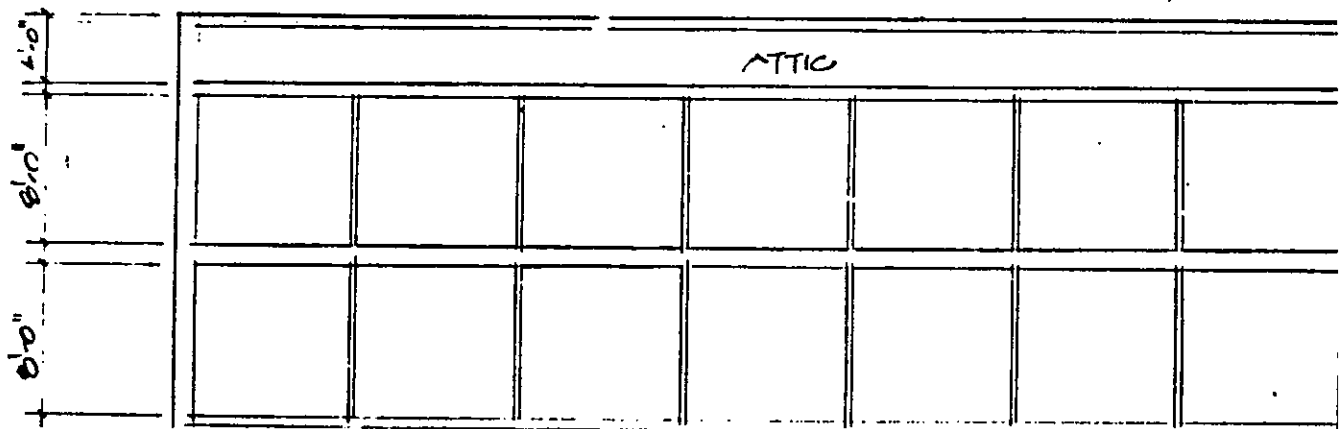
SHEET 12 12 52



SECTION HOUSE 313 MEETING STREET  
 $\frac{1}{8}'' = 1'-0''$

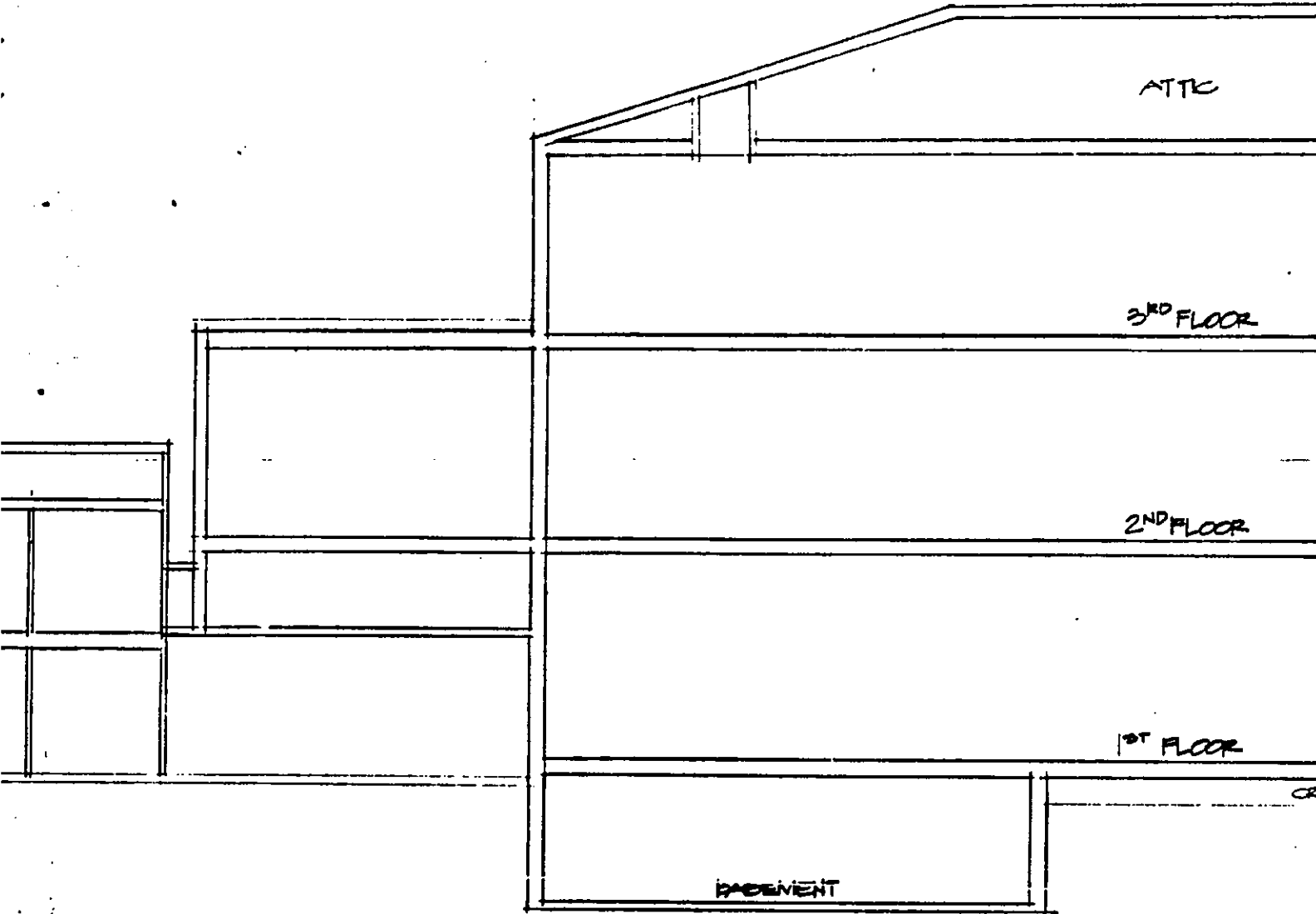






② SECTION @ GARAGE BLDG @ 309 MEETING  
1/8" = 1'-0"





ATTIC

3<sup>RD</sup> FLOOR

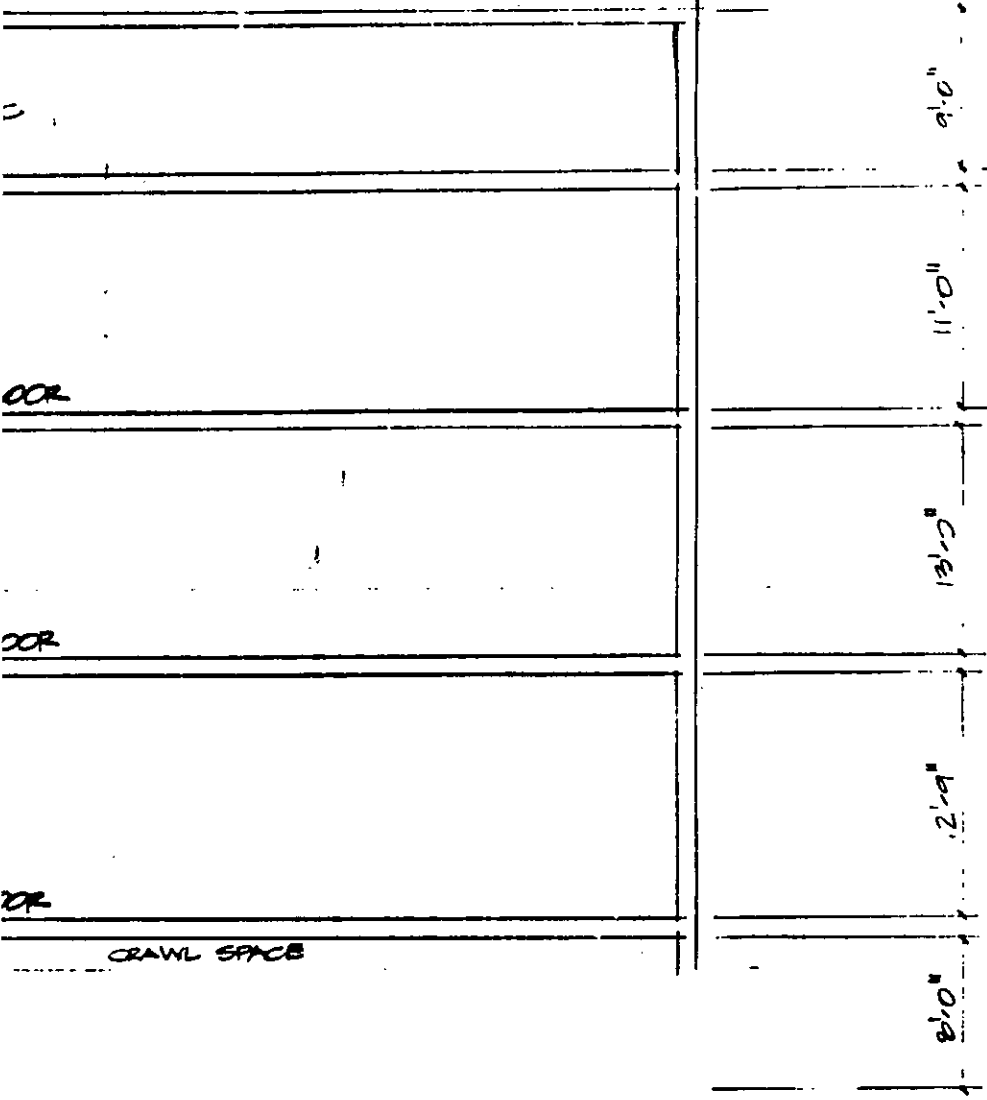
2<sup>ND</sup> FLOOR

1<sup>ST</sup> FLOOR

BASEMENT

6 ST.

7



SHT. 13

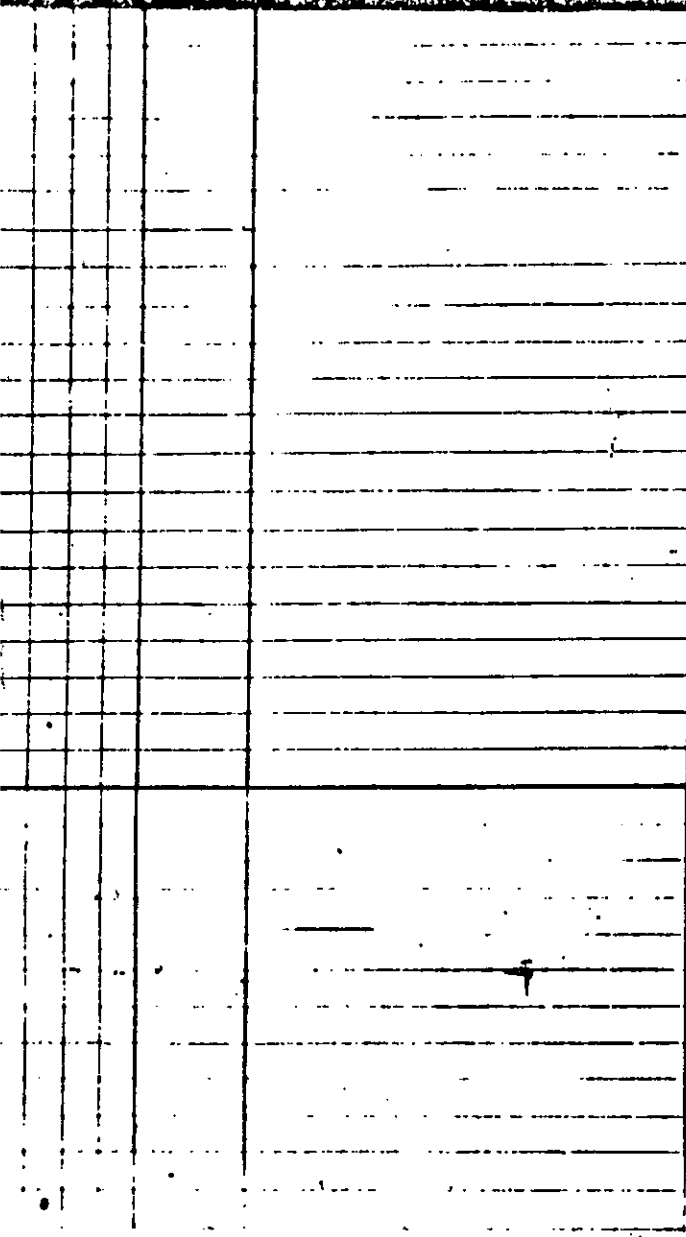
# FINISH SCHEDULE

NO.	ROOM NAME	FLOORS			BASE		WALLS			CEILING		NET
		EXISTING HARDWOOD	VINYL COMPOSITE TILE	ACERAMIC TILE	EXISTING WOOD	NEW WOOD	PAINTED PLASTER	PAINTED GIB	PAINTED WOOD	VINYL WALL COVERING	ACERAMIC TILE	
B1	BEDROOM											
B2	BEDROOM	2					2					2
B3	BEDROOM	2					2					2
B4	BATHROOM		4				2	4	5			2
B5	BATHROOM		4			4	2	4	5			2
B6	CLOSET						2					2
B7	CLOSET						2					2
B8	CLOSET						2					2
B9	CLOSET	2					2					2
B10	CLOSET		3				2					2
B11	CORRIDOR	2					2					2
D1	DINING AREA					2						2
D2	DINING AREA	2				2						2
E1	EFFICIENCY											
F1	FOYER					2						2
H1	HALLWAY					2						2
K1	KITCHEN		3			3	2	4				2
K2	KITCHEN					3	2	4				2
K3	KITCHEN		2			3	2	4				2
L1	LIVING/DINING	1				2	2	3				2
L2	LIVING/DINING	2				2	2					2
L3	LIVING/DINING	2				2	2					2
L4	LIVING AREA	1				4	2	3				2
L5	LINEH CLOSET						2					2







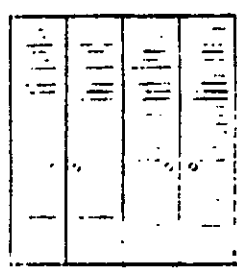


212	F	HM			1' 3/4"
213	E	HM			1' 3/4"
214	F	HM		2' 0"	1' 3/4"
215	R	WD		0' 0"	1' 3/4"
216	A	WD		2' 0"	1' 3/4"
217	C	WD		2' 0"	1' 3/4"
218	B	HM		1' 0"	1' 3/4"
219	E	HM		3' 0"	1' 3/4"
220	F	HM		2' 0"	1' 3/4"
221	F	HM		PR 2' 0"	1' 3/4"

DOORS



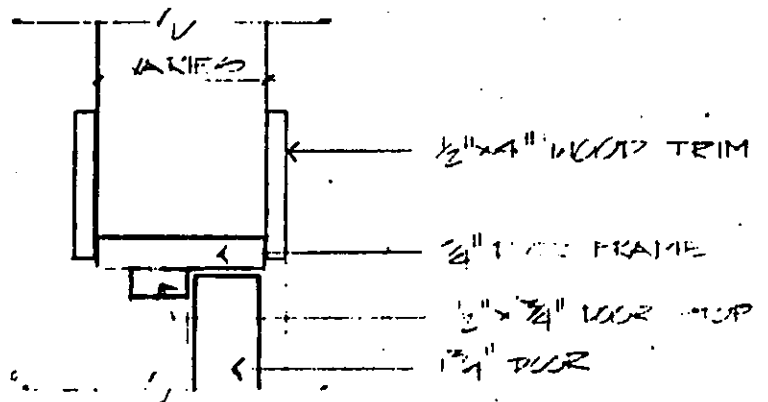
TYPE A



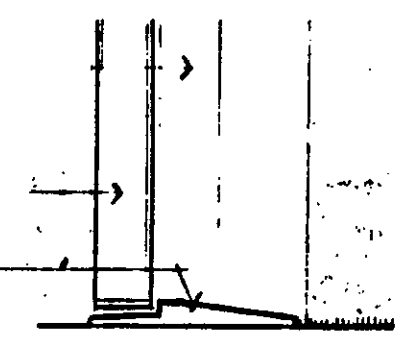
TYPE B



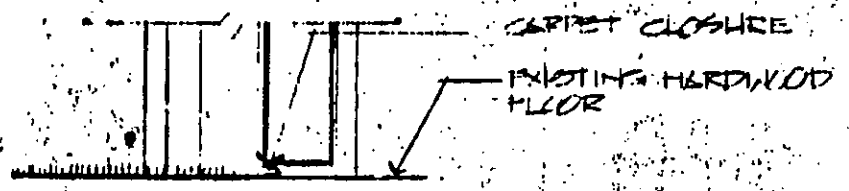
TYPE C



3 HEAD DETAIL (KAMB SIM.)  
SCALE: 3" = 1'-0"

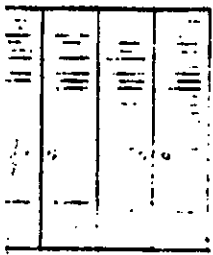


2 SILL DETAIL  
SCALE: 3" = 1'-0"

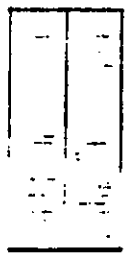


4 SILL DETAIL  
SCALE: 3" = 1'-0"

HM			1 3/4"		HM															
HM		2' 0"	1 3/4"		HM															* ONE BAR
LD		6' 0"	1 3/4"		LD	1/2"	1/20													* ALSO 1/2" 1/40,
LD		2' 0"	1 3/4"		LD	3/20	3/20													* ALSO 1/2" 1/40,
LD		2' 0"	1 3/4"		LD	1/20	1/20													* ALSO 1/2" 1/40,
HM		1'	1 3/4"		HM							1/2" B.L.FEL								1 1/2"
HM		3' 0"	1 3/4"		HM															
HM		2' 0"	1 3/4"		HM															
HM		2' 0"	1 3/4"		HM															



TYPE B



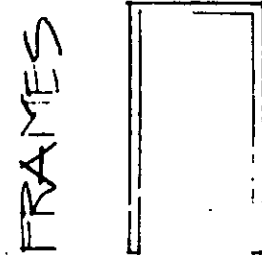
TYPE C



TYPE D



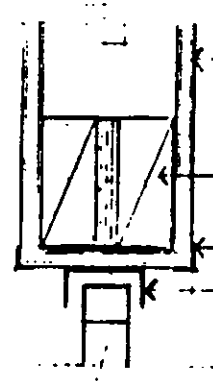
TYPE E



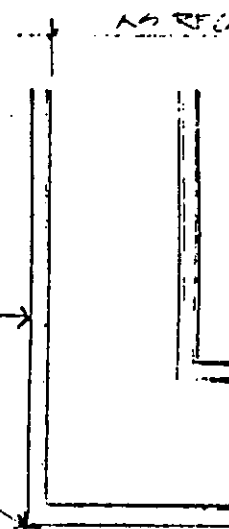
TYPE A

FRAMES

- 1/2" x 4" WOOD TRIM
- 2" FRAME
- 1" x 3/4" WOOD TOP
- 1 3/4" WOOD



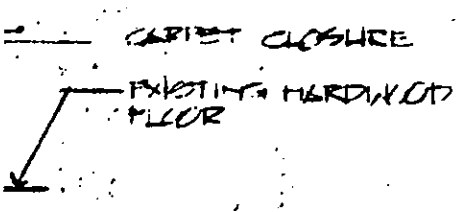
- 1/2" WOOD ON 2" x 4" STUD (C.G.)
- 2" x 1" HEATER (1 1/2" WOOD)
- ZINC HEAD
- 1/2" WOOD TRACK



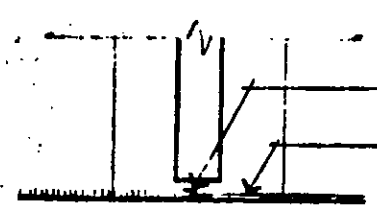
2 DETAIL (W/ B SIM.)  
E: 3" = 1'-0"

4 HEAD AT BIFOLD DR.  
SCALE: 3" = 1'-0"

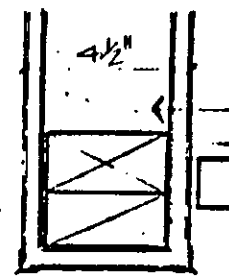
5 JAN 28 64



DETAIL  
E: 3" = 1'-0"



7 SILL AT BIFOLD DR.  
SCALE: 3" = 1'-0"



8 JAN 28 64





BH : 142PG90Z

FISHBURNE & GALLARD  
ATTORNEYS AT LAW  
P. O. BOX 689  
CHARLESTON, S. C. 29402

FILED, INDEXED & RECORDED  
H142-841  
1984 DEC 31 PM 4:42

chat 61.00  
1.00  
62.00

REGISTER MARYNE CONVEYANCE  
CHARLESTON COUNTY, S.C.

Recorded this 31 day of Dec. 1984  
On Property Record Card

*Pauline S. Hoyer*

Auditor Charleston County

THIS COPIED  
RAC 74  
DTS 1-7-85  
457-04-02-067  
0867hr 175  
110

FISHBURNE & GALLARD  
ATTORNEYS AT LAW  
P. O. BOX 689  
CHARLESTON, S. C. 29402

FISHBURNE & GALLARD  
ATTORNEYS AT LAW  
P. O. BOX 689  
CHARLESTON, S. C. 29402

